

ABBREVIATIONS

A.B. ANCHOR BOLT
ABV. ABOVE
ACOUS. ACOUSTIC
A.D. AREA DRAIN
ADH. ADHESIVE
ADJ. ADJUSTABLE, ADJACENT
AGG., AGGR. AGGREGATE
AL., ALUM. ALUMINUM
AND. AND
A.P. ACCESS PANEL
APPROX. APPROXIMATE
ARCH. ARCHITECT (URAL)
ASB. ASBESTOS
ASPH. ASPHALT
ASSEMBLY ASSEMBLY
A.T., AT. ATTENUATION
ATT. ATTENUATION
AUTO. AUTOMATIC

BD. BOARD
BET. BETWEEN
BITUM. BITUMINOUS
BLG. BUILDING
BLK. BLOCK
BLKG. BLOCKING
BM. BEAM
BOT., BTM. BOTTOM
B.U. BUILT UP

CAB. CABINET
C.B. CATCH BASIN
C.B. & G. CURB AND GUTTER
CEM. CEMENT
CER. CERAMIC
C.G. CORNER GUARD
C. CENTER LINE
C.I. CAST IRON
C.J. CONSTRUCTION JOINT
CL. CLEAN
CLG. CEILING
CLKG. CULKING
CLO. CLOSET
CLR. CLEAR
C.M.U. CONCRETE MASONRY UNIT
CNTR. COUNTER
C.O. CASED OPENING
COL. COLUMN
COMP. COMPOSITION
CONC. CONCRETE
CONN. CONNECTION
CONSTR. CONSTRUCTION
CONT.(N). CONTINUOUS
CONTR. CONTRACTOR, CONTROL
CORR. CORRIDOR
CP. CARPET
C.R. CURTAIN ROD
C.S. COUNTERSINK
C.T. CERAMIC TILE
CTR. CENTER
CURT. CURTAIN
C.W.G. CLEAR WIRE GLASS
CWT. COUNTERWEIGHT

DBL. DOUBLE
D.D. DOOR DIMENSION
DEPT. DEPARTMENT
DET. DETAIL
D.F. DRINKING FOUNTAIN
DIAG. DIAGONAL
D.I. DROP INLET
DIA. DIAMETER
DIM. DIMENSION
DISP. DISPENSER
DN. DOWN
D.O. DOOR OPENING
D.P. DIMENSION POINT
D.P.H. DOUBLE PAPER HOLDER
DOORS DOORS
DRESS. DRESSING
DS. DOWNSPOUT
D.S.P. DRY STANDPIPE
DWG. DRAWING(S)
DWR. DRAWER

E. EAST
(E) EXISTING
EA. EACH
E.B. EXPANSION BOLT
E.J. EXPANSION JOINT
EL. ELEVATION
ELEC. ELECTRICAL
ELEV. ELEVATION, ELEVATOR
EMER. EMERGENCY
ENCL. ENCLOSURE
ENT. ENTRANCE
E.P. ELECTRICAL PANELBOARD
EPXY. EPOXY COATING
EQ. EQUIPMENT
EQPT. EQUIPMENT
E.W. EACH WAY
E.W.C. ELECTRICAL WATER COOLER
EXIST., EXST. EXISTING
EXP. EXPOSED
EXT. EXPANSION
EXTERIOR

F. FEMALE
F. & S. FIRE AND SAFETY IMPROVEMENTS
F.A. FIRE ALARM
F.A.C. FIRE APPARATUS CLOSET
F.B. FLAT BAR
F.D. FLOOR DRAIN
F.D.C.O. FOUNDATION DRAIN CLEAN OUT
F.D.C. FOUNDATION
F.E.C. FIRE EXTINGUISHER CABINET
F.F. FINISHED FLOOR
F.H. FULL HEIGHT
F.H.C. FIRE HOSE CABINET
F.H.E.B. FLAT HEAD EXPANSION BOLT
F.H.M.S. FLAT HEAD MACHINE SCREW
F.H.V. FIRE HOSE VALVE
F.H.V.C. FIRE HOSE VALVE CABINET
F.H.W.S. FLAT HEAD WOOD SCREW
FIN. FINISH (EO)
FL. FLOOR
FLAM. FLAMMABLE
FLASH. FLASHING
FLUOR. FLUORESCENT
F.O. FACE OF
F.O.C. FACE OF CONCRETE
F.O.F. FACE OF FINISH
F.O.S. FACE OF STUD
F.P. FIREPROOF
FPRG. FIREPROOFING
FR. FRAME
F.S. FULL SIZE

FT. FEET
FTG. FOOTING
FURR., FURR'G. FURRIER
FUS. FUSIBLE
FUT. FUTURE
G. GAS
GALV. GALVANIZED
G.B. GRAB BAR
G.F.I. GROUND FAULT INDICATOR
G.F.R.C. GLASS FIBER REINFORCED CONCRETE
GL. GLASS
GND. GROUND
GR. GRADE
G.S.M. GALVANIZED SHEET METAL
G.W.B. GYPSUM WALL BOARD
GYP. GYPSUM

H. HEIGHT
H. & C.W. HOT AND COLD WATER
H.B. HOSE BIBB
H.C. HOLLOW CORE
HDCP. HANDICAPPED
HWD. HARDWOOD
HWE. HARDWARE
HGT. HEIGHT
H.M. HOLLOW METAL
H.M.F. HOLLOW METAL FRAME
HND. HAND
HORIZ. HORIZONTAL
H.P. HIGH POINT
H.P.L. HIGH PRESSURE LAMINATE
HR. HOUR
H.R. HANDRAIL
H.V.A.C. HEATING, VENTILATING, AIR CONDITIONING
HW. HARDWARE

I.D. INSIDE DIAMETER/DIMENSION
INST. INSTRUMENT
INSUL. INSULATION
INT. INTERIOR
JAN. JANITOR
JT. JOINT

K. KIP (S)
KIT. KITCHEN
K.O. KNOCKOUT
K.P. KICKPLATE

L. LENGTH, LONG
LAB. LABORATORY
LAM. LAMINATE
LAV. LAVATORY
LKR. LOCKERS
LOC. LOCATION
L.P. LOW POINT
LT. LIGHT

M. MALE
M.B. METAL BOLT
M.C. MEDICINE CABINET
MACH. MACHINE
MAX. MAXIMUM
MECH. MECHANICAL
MEMB. MEMBRANE
MET. METAL
MFG. MANUFACTURER
MISC. MISCELLANEOUS
MH. MANHOLE
MIN. MINIMUM
MIR. MIRROR
MISC. MISCELLANEOUS
M.O. MOUNTED
MTD. MOUNTED
MUL. MULLION

N. NORTH
(N) NEW
NEOP. NOT IN CONTRACT
N.I.C. NOT IN CONTRACT
NO. OR # NUMBER
NOM. NOMINAL
N.T.S. NOT TO SCALE

OA. OVERALL
OBS. OBSCURE
O.C. ON CENTER
O.D. OUTSIDE DIAMETER/DIMENSION
OFF. OFFICE
OPER. OPERABLE
OPNG. OPENING
OPP. OPPOSITE
P.A. PLANTING AREA
PART. (LT.) PARTITION
PASS. PASSENGER
PAV. PAVING
P.B. PUSH BUTTON
P.D. PLAN DIMENSION
PERF. PERFORATED
PL. PLATE
P. LAM. PLASTIC LAMINATE
PLAS. PLASTER
PLG. PLUMBING
PLYND. PLYWOOD
PR. PAIR
PRECAST. PRECAST
PROJ. PROJECTION
PT. POINT
P.T.D. PAPER TOWEL DISPENSER
P.T.R. PAPER TOWEL RECEPTACLE
PTN. PARTITION
P.V.C. POLY-VINYL CHLORIDE

Q.T. QUARRY TILE
QTY. QUANTITY
R. RISER
RAD. RADIUS
R.D. ROOF DRAIN
RDWD. REDWOOD
RECESS. RECESSED
RECT. RECTANGULAR
REF. REFERENCE
REFR. REFRIGERATOR
REIN. REINFORCED
REMOV. REMOVABLE
REQ., REQD. REQUIRED
RESIL. RESILIENT
REG. REGISTER
R.H.W.S. ROUND HEAD WOOD SCREW
RM. ROOM
R.O. ROUGH OPENING
R. & S. RUD AND SHELF
R.W.L. RAIN WATER LEADER
RDWD. REDWOOD

S. SOUTH
S.B.P. SMOKE BARRIER PARTITION
S.C. SOLID CORE
S.C.D. SEAT COVER DISPENSER
S.D. SCHEDULE
SECT. SEE ELECTRICAL DRAWINGS
S.E.D. SERVICE
S.M. SHEET METAL
S.M.D. SEE MECHANICAL DRAWINGS
S.N.D. SANITARY NAPKIN DISPENSER
S.N.R. SANITARY NAPKIN RECEPTACLE
SOIL. SOILED
SP. SPECIAL
SPEC. SPECIFICATIONS
SP.G. SPANDREL GLASS
SPR. SPEAKER
SPR. SPRING
S.S.D. SEE STRUCTURAL DRAWINGS
S.S. SERVICE SINK
S.ST. STAINLESS STEEL
ST. STORAGE
STATION
SOUND TRANSMISSION COEFFICIENT
STD. STANDARD
STER. STERILE
STL. STEEL
STOR. STORAGE
STR. STRUCTURAL
SURF. SURFACE
SUSP. SUSPENDED
SYM. SYMMETRICAL

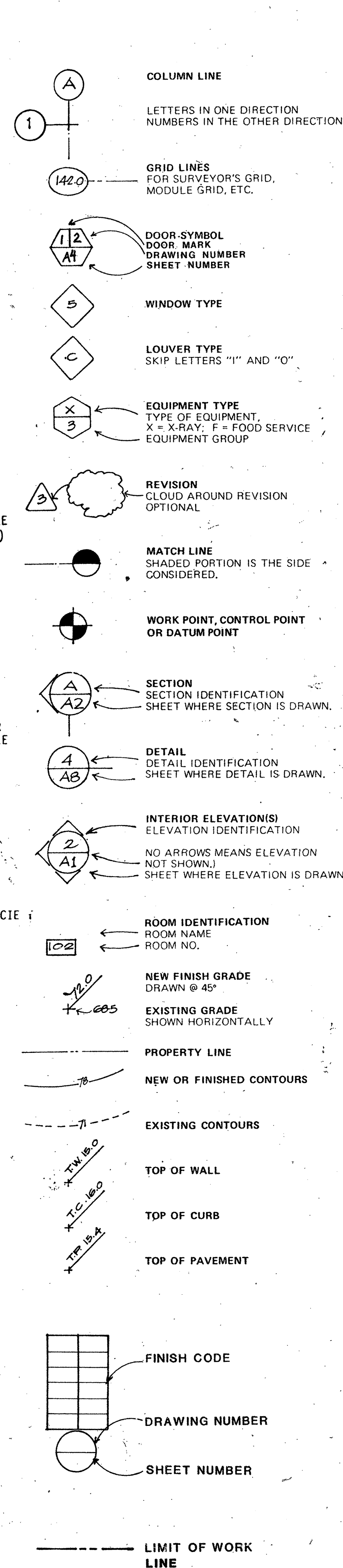
T. TOILET
T.B. TOWEL BAR
T.C. TOP OF CURB
T.C. GL. TEMPERED CLEAR GLASS
T.D. TOWEL DISPENSER
TECH. TECHNICIAN
TEL. TELEPHONE
TEMP. TEMPERED
TERRAZZO
TONGUE & GROOVE
TH. THRESHOLD
THK. THICKNESS
T.P. TOP OF PAVEMENT
T.P.D. TOILET PAPER DISPENSER
TRD. TREADS
TREAT. TREATMENT
T.S.G. TINTED SAFETY GLASS
T.W. TOP OF WALL
TYP. TYPICAL

U.N.O., U.O.N. UNLESS NOTED OTHERWISE
U.O.S. UNLESS OTHERWISE SHOWN
U. URINAL
UNF. UNFINISHED
UR. URINAL
UTIL. UTILITY

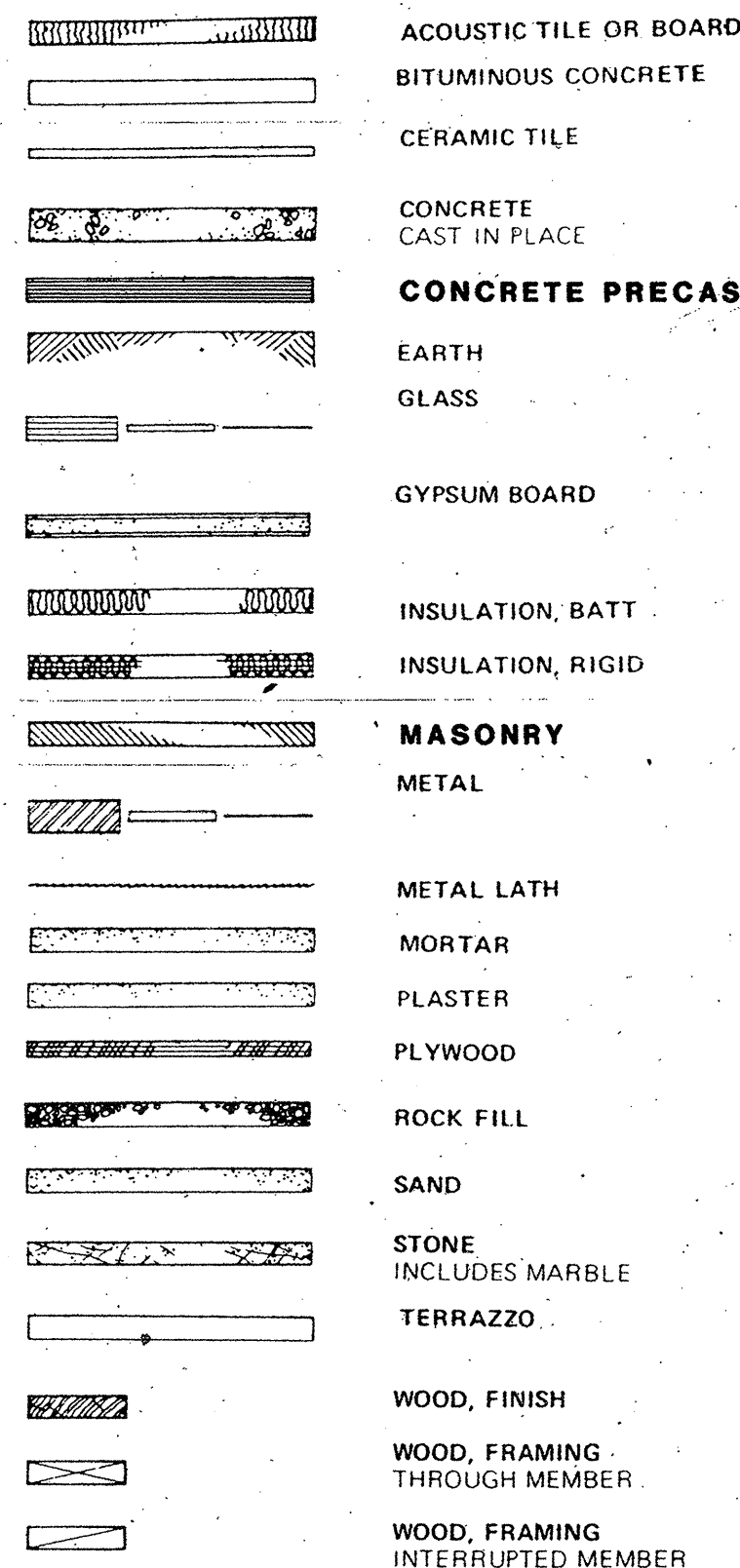
V.A.T., V.A. VINYL ASBESTOS TILE
V.B. VINYL BASE
VERT. VERTICAL
VEST. VESTIBULE
VIN. VINYL

W. WEST
W. WITH
W.C. WATER CLOSET
W.C. WHEEL CHAIR
W.D. WINDOW DIMENSION
W.D. WOOD
W.G. WALL GUARD
W/O. WITHOUT
W.P. WATERPROOF
W.SCT. WAINSCOT
WGT. WEIGHT

SYMBOLS



MATERIALS



GENERAL NOTES

- GENERAL NOTES:
- DELINEATION CONVENTIONS FOR ITEMS SHOWN SCREENED.
 - WITHIN A "LIMIT OF WORK LINE" ITEMS SHOWN SCREENED ARE EXISTING, TO BE DEMOLISHED.
 - WHEN A "LIMIT OF WORK LINE" IS NOT SHOWN, SCREENED ITEMS ARE EXISTING, TO REMAIN.
 - NOTES REFER TO NEW WORK UNLESS OTHERWISE NOTED (I.E., (E) OR EXISTING).
 - DOORS NOT CALLED OUT BY DOOR MARKS RECEIVE NO WORK, EXCEPT AS DEFINED BY THE FINISH SCHEDULE.
 - APPROXIMATE GROSS FLOOR AREAS

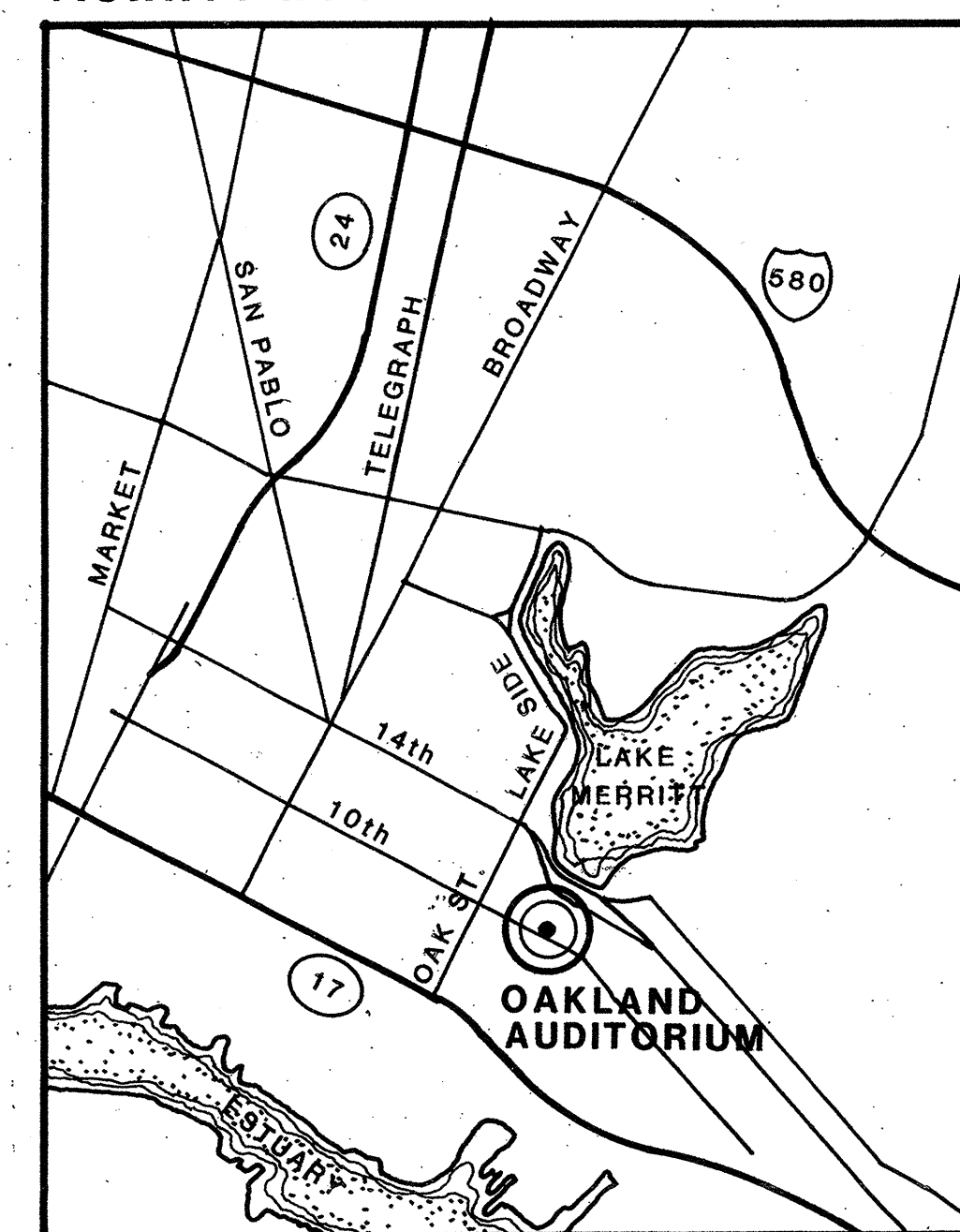
ITEM	AREA
A. BASEMENT TOTAL	78,000
B. FIRST FLOOR	
ARENA	49,800
THEATER	28,200
TOTAL	78,000
C. SECOND FLOOR	
ARENA	12,000
THEATER	6,800
OLYMPIC ROOM	11,300
TOTAL	30,100
D. THIRD FLOOR	
ARENA	1,800
THEATER	3,400
BALLROOM	8,100
GOLD ROOM	5,900
TOTAL	19,200
E. ROOF TOTAL	78,000
F. BUILDING TOTAL	205,300

HENRY J. KAISER

CONVENTION CENTER

10 Tenth Street, Oakland, California

VICINITY MAP



APPROVALS

I HEREBY CERTIFY THAT TO THE BEST OF MY KNOWLEDGE THE INFORMATION CONTAINED WITHIN THESE DOCUMENTS COMPLIES WITH ALL FEDERAL, STATE, AND LOCAL CODES, ORDINANCES, AND DIRECTIVES RELATING TO THIS WORK.

[Signature]

[Signature]

Director of Public Works

[Signature]

City Architect

SHEET INDEX

ARCHITECTURAL

A1	TITLE SHEET
A2.1.1	SURVEY: EXISTING SITE CONDITIONS
A2.1.2	SURVEY: UTILITIES
A2.1.3	SURVEY: AERIAL SITE PLAN
A2.2	SITE PLAN
A2.3	SITE ENLARGED PLANS
A2.4	SITE ENLARGED PLANS - DETAILS
A2.5	DETAILS
A3.1	BASEMENT KEY PLAN
A3.2	1ST FLOOR KEY PLAN
A3.3	2ND FLOOR KEY PLAN
A3.4	3RD FLOOR KEY PLAN
A3.5	ROOF PLAN
A3.6	ROOF DETAILS
A3.7	MECHANICAL PENTHOUSE
A3.8	ROOF DETAILS
A4.1	NORTH ELEVATION
A4.2	SOUTH ELEVATION
A4.3	EAST AND WEST ELEVATIONS
A4.4	LONGITUDINAL SECTION
A4.5	ARENA TRANSVERSE SECTIONS
A4.6	THEATER TRANSVERSE SECTIONS
A5.1	BASEMENT ENLARGED PLANS
A5.2	DETAILS
A6.1	ARENA ENLARGED PLANS
A6.2	ARENA ADDITIVE ALTERNATES
A6.3	ARENA ADDITIVE ALTERNATES
A6.4	REFLECTED CEILING PLAN
A6.5	DETAILS
A6.6	DETAILS
A6.7	DETAILS
A6.8	DETAILS
A6.9	DETAILS
A7.1	THEATER ENLARGED PLANS
A7.2.1	THEATER ADDITIVE ALTERNATES
A7.2.2	THEATER ADDITIVE ALTERNATES
A7.3	THEATER ELEVATION
A7.4	REFLECTED CEILING PLAN
A7.5	THEATER FLOOR PLANS
A7.6	DETAILS
A8.1	OLYMPIC ROOM ENLARGED PLANS
A8.2	OLYMPIC ROOM INTERIOR ELEVATIONS
A8.3	DETAILS
A8.4	SCHEDULES
A9.1	BALLROOM ENLARGED PLANS
A9.2	ADDITIVE ALTERNATES
A9.3	REFLECTED CEILING PLAN
A10.1	GOLD ROOM ENLARGED PLANS
A10.2	GOLD ROOM INTERIOR ELEVATIONS

STRUCTURAL

S1	GENERAL NOTES AND TYPICAL DETAILS
S2.1.1	EAST PORCH AND STAIR PLAN
S2.1.2	EAST PORCH AND STAIR DETAILS
S2.1.3	WEST PORCH AND STAIR DETAILS
S2.1.4	MISCELLANEOUS EXTERIOR STRUCTURES
S2.1.5	DETAILS
S3.1	BASEMENT KEY AND DEMOLITION PLAN
S3.2	FIRST FLOOR KEY PLAN
S3.3	SECOND FLOOR KEY PLAN
S3.4	THIRD FLOOR KEY PLAN
S3.5	ROOF KEY PLAN
S4.2	SOUTH ELEVATION REPAIRS
S4.3	EAST AND WEST ELEVATION REPAIRS
S5.1	BASEMENT SLAB BOTTOM STEEL
S5.2	BASEMENT SLAB TOP STEEL
S5.3	BASEMENT SLAB SPECIAL DETAILS
S6.1.1	VERTICAL BRACING LINE 12, ELEVATIONS AND DETAILS
S6.1.2	VERTICAL BRACING LINE 12, DETAILS
S6.2.1	ROOF DIAPHRAGM DETAILS
S6.2.2	ROOF DIAPHRAGM DETAILS
S6.2.3	ROOF DIAPHRAGM DETAILS
S6.2.4	ROOF DIAPHRAGM DETAILS
S7.1	INFILL CONCRETE WALL
S7.2.1	THEATER CEILING BRACING, PLAN AND ELEVATIONS
S7.2.2	THEATER CEILING BRACING DETAILS
S7.3	THEATER CEILING BRACING DETAILS
S7.4	HVAC PLATFORMS, PLANS AND DETAILS
S7.5	TANK BRACING

MECHANICAL

M1.0	SCHEDULES AND ABBREVIATIONS
M2.3	SITE ENLARGED PLANS
M3.1	BASEMENT KEY PLAN
M3.2	FIRST FLOOR KEY PLAN
M3.3	SECOND FLOOR KEY PLAN
M3.4	THIRD FLOOR KEY PLAN
M3.5	ROOF PLAN
M4.5	ARENA TRANSVERSE SECTIONS
M5.1	BASEMENT ENLARGED PLAN
M6.1	ARENA ENLARGED PLANS
M6.2	ARENA ADDITIVE ALTERNATES
M6.3	ARENA ADDITIVE ALTERNATES
M7.1	THEATER ENLARGED PLANS
M7.2.1	THEATER ADDITIVE ALTERNATES

LANDSCAPE

L1	PLANTING PLAN
L2	IRRIGATION PLAN

TITLE SHEET

The Ratcliff Architects

6117 GROVE ST. OAKLAND, CA 94609
PHONE: (415) 852-1972

DRAWN BY: [Signature] CHECKED BY: [Signature]
PRINCIPAL PROJECT DIRECTOR

ASSOCIATED ARCHITECTS:

Ishimaru Design Group

488 25TH ST. OAKLAND, CA 94612 (415) 839-8313

STRUCTURAL ENGINEERS

H. J. Degenkolb Associates

350 SANSOME ST. SUITE 500 SAN FRANCISCO, CA 94104 (415) 392-8952

ASSOCIATED STRUCTURAL ENGINEERS

Jordan-Avent & Associates

MECHANICAL ENGINEERS

JYA Consulting Engineers

50 BRANNAN ST. SAN FRANCISCO, CA 94107 (415) 543-8411

ASSOCIATED MECHANICAL ENGINEERS

Pyramid Designs

ELECTRICAL ENGINEERS

Ray I. Juachon & Associates

65 SHERIDAN ST. SAN FRANCISCO, CA 94103 (415) 552-4832

LIGHTING

Marlene Lee Lighting Design Consulting Engineers

573 MISSION ST. SAN FRANCISCO, CA 94105 (415) 546-7885

Henry J. Kaiser

Convention Center

10-10TH ST. OAKLAND, CA 94607

TITLE SHEET

PROJECT NO. 8129

DRAWING NO.

A1

DATE 23 JULY 1982

The Ratcliff Architects

6117 GROVE ST. OAKLAND, CA 94609
PHONE: (415) 852-1972

DRAWN BY: *Barbara Winters* CHECKED BY: *Barbara Winters*
PROJECT DIRECTOR: *BURNS CARVALADE*

ASSOCIATED ARCHITECTS:
Ishimaru Design Group
468 25TH ST.
OAKLAND, CA 94612 (415) 839-8313

STRUCTURAL ENGINEERS:
H. J. Degenkolb Associates
350 SANSOME ST., SUITE 500
SAN FRANCISCO, CA 94104 (415) 392-6952

ASSOCIATED STRUCTURAL ENGINEERS:
Jordan-Avent & Associates

MECHANICAL ENGINEERS:
JYA Consulting Engineers
50 BRANNAN ST.
SAN FRANCISCO, CA 94107 (415) 543-8411

ASSOCIATED MECHANICAL ENGINEERS:
Pyramid Designs

ELECTRICAL ENGINEERS:
Ray I. Juachon & Associates
65 SHERIDAN ST.
SAN FRANCISCO, CA 94103 (415) 552-4832

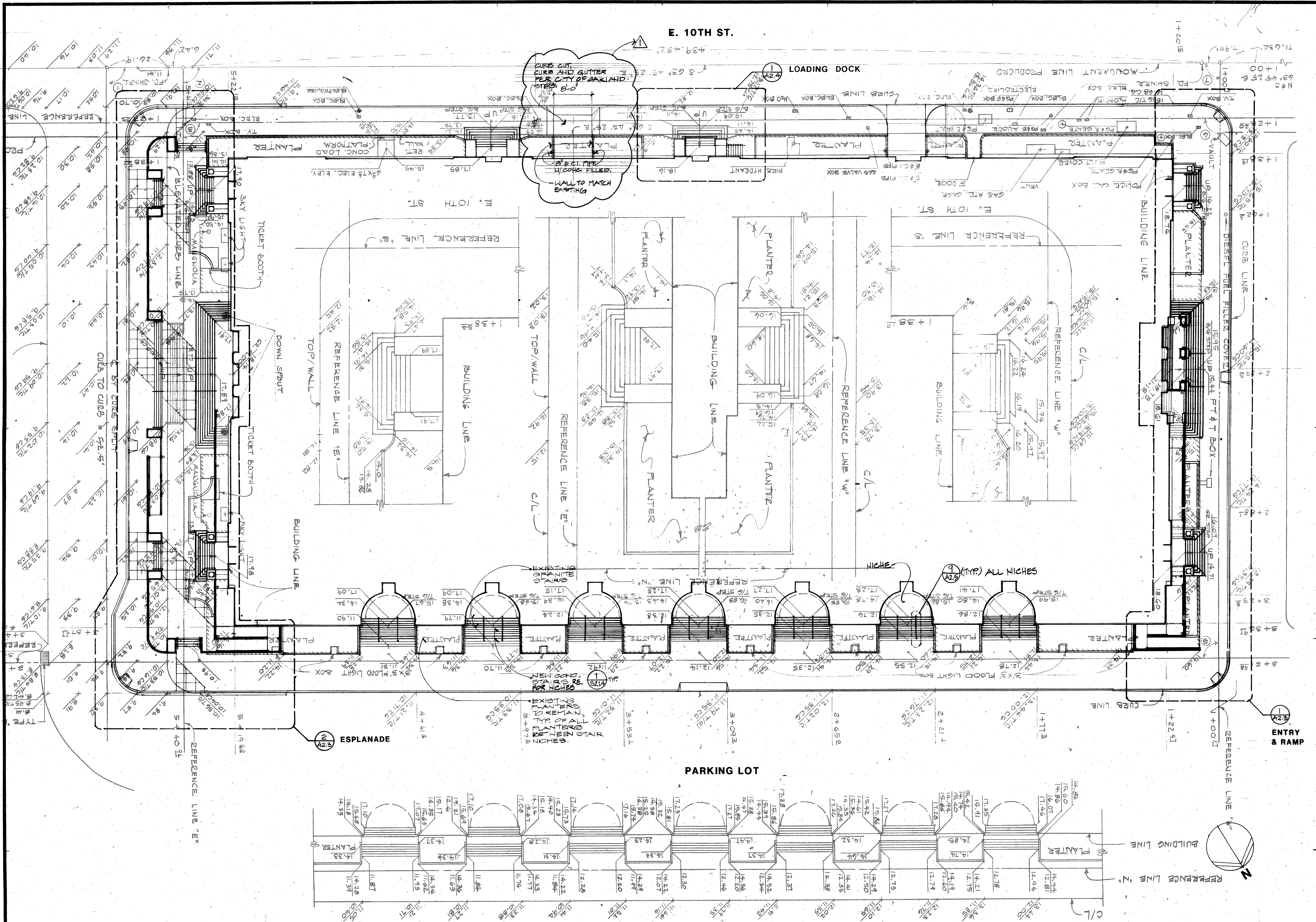
LIGHTING:
Marlene Lee Lighting Design Consulting Engineers
573 MISSION ST.
SAN FRANCISCO, CA 94105 (415) 546-7885

18 AUG 1982 APPEN JM #1

Henry J. Kaiser Convention Center
10-10TH ST.
OAKLAND, CA 94607

SITE PLAN

64 48 32 24 16 8 4 0
PROJECT NO. 8129 DRAWING NO. **A 2.2**
DATE 23 JULY 1982



The Ratcliff Architects

6117 GROVE ST. OAKLAND, CA 94609
PHONE: (415) 852-1972

DRAWN: *Burns* PROJECT DIRECTOR: *Burns*
CHECKED: *Burns*

ASSOCIATED ARCHITECTS:
Ishimaru Design Group
488 25TH ST. OAKLAND, CA 94612 (415) 838-8313

STRUCTURAL ENGINEERS:
H. J. Degenkolb Associates
350 SANSOME ST., SUITE 500 SAN FRANCISCO, CA 94104 (415) 392-6952

ASSOCIATED STRUCTURAL ENGINEERS:
Jordan-Avent & Associates

MECHANICAL ENGINEERS:
JYA Consulting Engineers
50 BRANNAN ST. SAN FRANCISCO, CA 94107 (415) 543-8411

ASSOCIATED MECHANICAL ENGINEERS:
Pyramid Designs

ELECTRICAL ENGINEERS:
Ray I. Juachon & Associates
65 SHERIDAN ST. SAN FRANCISCO, CA 94103 (415) 552-4832

LIGHTING:
Marlene Lee Lighting Design Consulting Engineers
573 MISSION ST. SAN FRANCISCO, CA 94105 (415) 546-7885

Henry J. Kaiser Convention Center
10-10TH ST. OAKLAND, CA 94607

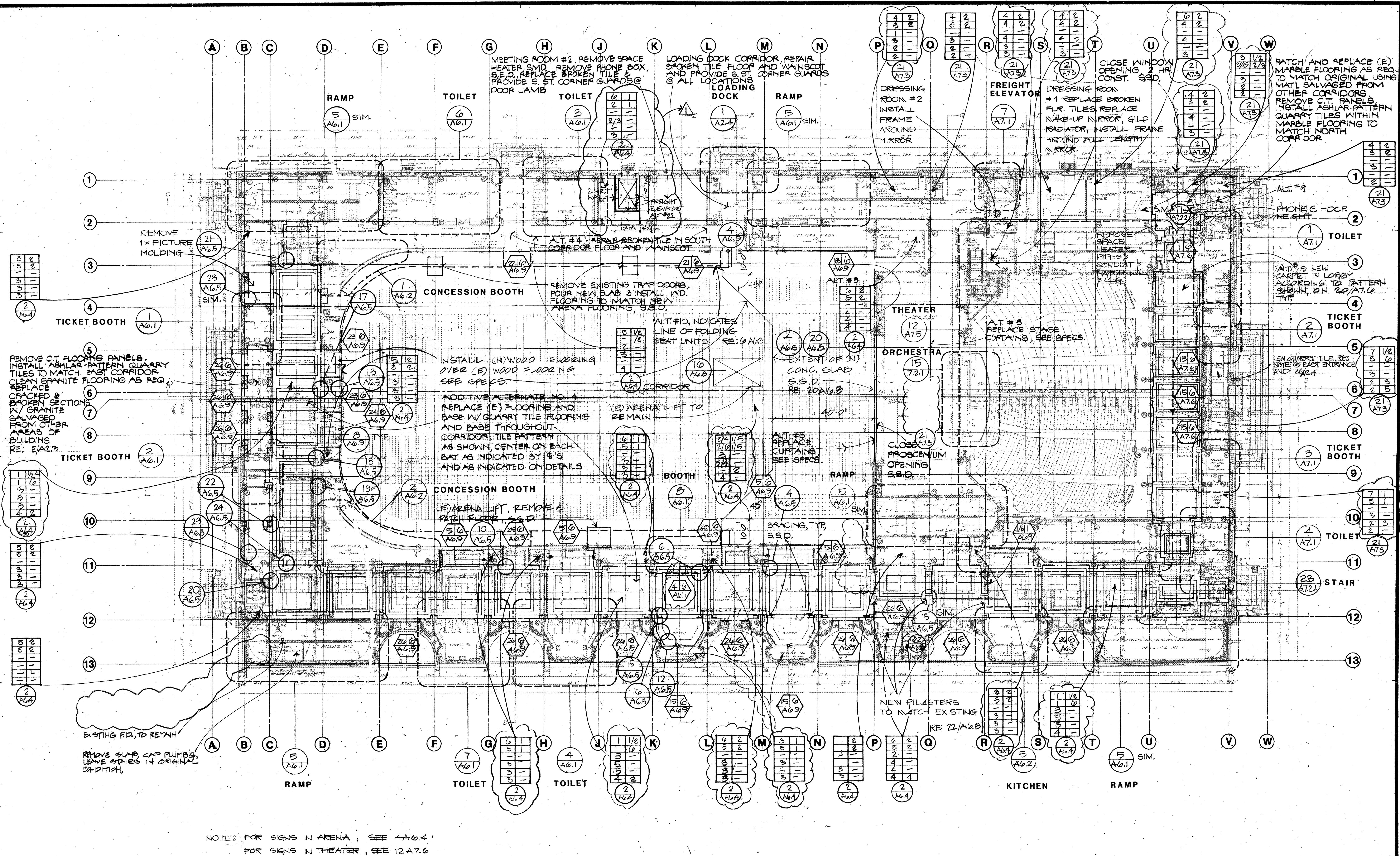
FIRST FLOOR KEY PLAN

64 48 32 16 8 4 0

PROJECT NO. 8129 DRAWING NO.

A3.2

DATE 23 JULY 1982



The Ratcliff Architects

6117 GROVE ST. OAKLAND, CA 94609
PHONE: (415) 852-1972

DRAWN BY *John Ledwith* PROJECT DIRECTOR
PRINCIPAL *John Ledwith* *John Ledwith* *John Ledwith*
SUNSHINE CALIFORNIA COUNCIL

ASSOCIATED ARCHITECTS:
Ishimaru Design Group
468 25TH ST.
OAKLAND, CA 94612 (415) 839-5313

STRUCTURAL ENGINEERS
H. J. Degenkolb Associates
350 SANSOME ST., SUITE 500
SAN FRANCISCO, CA 94104 (415) 392-6952

ASSOCIATED STRUCTURAL ENGINEERS
Jordan-Avent & Associates

MECHANICAL ENGINEERS
JYA Consulting Engineers
50 BRANNAN ST.
SAN FRANCISCO, CA 94107 (415) 543-8411

ASSOCIATED MECHANICAL ENGINEERS
Pyramid Designs

ELECTRICAL ENGINEERS
Ray I. Juachon & Associates
65 SHERIDAN ST.
SAN FRANCISCO, CA 94103 (415) 552-4832

LIGHTING
Marlene Lee Lighting Design Consulting Engineers
573 MISSION ST.
SAN FRANCISCO, CA 94105 (415) 546-7885

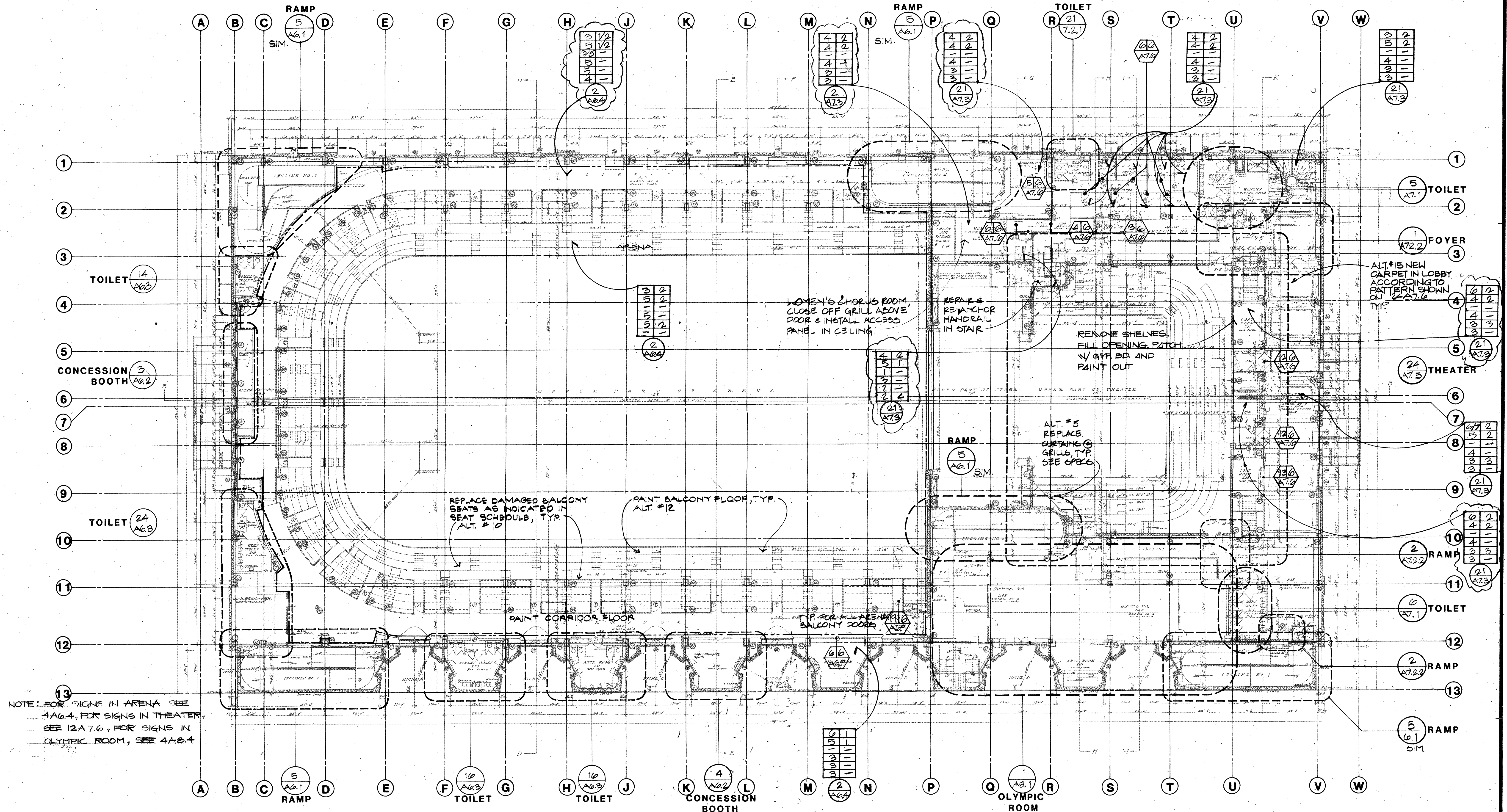
Henry J. Kaiser Convention Center
10-10TH ST.
OAKLAND, CA 94607

SECOND FLOOR KEY PLAN

64 48 32 24 16 8 4 0
PROJECT NO. 8129 DRAWING NO.

A3.3

DATE 23 JULY 1982



SEAT REPAIR SCHEDULE (Alt.#10)

SECTION	SEAT NO.	SEAT	BACK	ARM REST	WALL CONN.	SECTION	SEAT NO.	SEAT	BACK	ARM REST	WALL CONN.	SECTION	SEAT NO.	SEAT	BACK	ARM REST	WALL CONN.	SECTION	SEAT NO.	SEAT	BACK	ARM REST	WALL CONN.	SECTION	SEAT NO.	SEAT	BACK	ARM REST	WALL CONN.	SECTION	SEAT NO.	SEAT	BACK	ARM REST	WALL CONN.	
DRESS CIRCLE																																				
A	AA2	x				J	AA10	x				P	AA9	x				Y	AA5	x				8	A2	x					16	A12	x			
B	AA8	x				K	AA22	x				R	AA5	x				Y	AA5	x				8	A6	x					16	A16	x			
C	CC6	x				L	BB4	x				S	CC5	x				Z	AA11	x				8	A10	x					16	A12	x			
D	CC12	x				M	BB7	x				T	CC17	x				Z	AA17	x				8	A12	x					16	A12	x			
E	CC14	x				N	BB10	x				U	CC17	x				Z	AA19	x				8	A12	x					16	A12	x			
F	CC16	x					BB16	x				V	CC17	x				Z	AA19	x				8	A12	x					16	A12	x			
G	CC18	x					BB20	x										Z	AA19	x				8	A12	x					16	A12	x			
H	AA6	x					BB22	x										Z	AA19	x				8	A12	x					16	A12	x			
I	AA14	x					CC24	x										Z	AA19	x				8	A12	x					16	A12	x			
J	AA16	x					CC26	x										Z	AA19	x				8	A12	x					16	A12	x			
K	AA18	x																Z	AA19	x				8	A12	x					16	A12	x			
L	AA20	x																Z	AA19	x				8	A12	x					16	A12	x			
M	AA22	x																Z	AA19	x				8	A12	x					16	A12	x			
N	AA22	x																Z	AA19	x				8	A12	x					16	A12	x			
O	AA22	x																Z	AA19	x				8	A12	x					16	A12	x			
P	AA22	x																Z	AA19	x				8	A12	x					16	A12	x			
Q	AA22	x																Z	AA19	x				8	A12	x					16	A12	x			
R	AA22	x																Z	AA19	x				8	A12	x					16	A12	x			
S	AA22	x																Z	AA19	x				8	A12	x					16	A12	x			
T	AA22	x																Z	AA19	x				8	A12	x					16	A12	x			
U	AA22	x																Z	AA19	x				8	A12	x					16	A12	x			
V	AA22	x																Z	AA19	x				8	A12	x					16	A12	x			
W	AA22	x																Z	AA19	x				8	A12	x					16	A12	x			
X	AA22	x																Z	AA19	x				8	A12	x					16	A12	x			
Y	AA22	x																Z	AA19	x				8	A12	x					16	A12	x			
Z	AA22	x																Z	AA19	x				8	A12	x					16	A12	x			

(continued on A3.4)

The Ratcliff Architects

6117 GROVE ST. OAKLAND, CA 94609
PHONE (415) 552-1972

DRAWN BY *B. Ratcliff* CHECKED BY *B. Ratcliff*
PRINTED BY *B. Ratcliff* DATE 23 JULY 1982

ASSOCIATED ARCHITECTS:

Ishimaru Design Group

468 25TH ST. OAKLAND, CA 94612 (415) 839-8313

STRUCTURAL ENGINEERS:

H. J. Degenkolb Associates

350 SANSOME ST., SUITE 500 SAN FRANCISCO, CA 94104 (415) 392-6952

ASSOCIATED STRUCTURAL ENGINEERS:

Jordan-Avent & Associates

MECHANICAL ENGINEERS:

JYA Consulting Engineers

50 BRANNAN ST. SAN FRANCISCO, CA 94107 (415) 543-8411

ASSOCIATED MECHANICAL ENGINEERS:

Pyramid Designs

ELECTRICAL ENGINEERS:

Ray I. Juachon & Associates

65 SHERIDAN ST. SAN FRANCISCO, CA 94103 (415) 552-4832

LIGHTING:

Marlene Lee Lighting Design Consulting Engineers

573 MISSION ST. SAN FRANCISCO, CA 94105 (415) 546-7885

18 AUG. 1982 ADDENDUM #1

Henry J. Kaiser Convention Center

10-10TH ST. OAKLAND, CA 94607

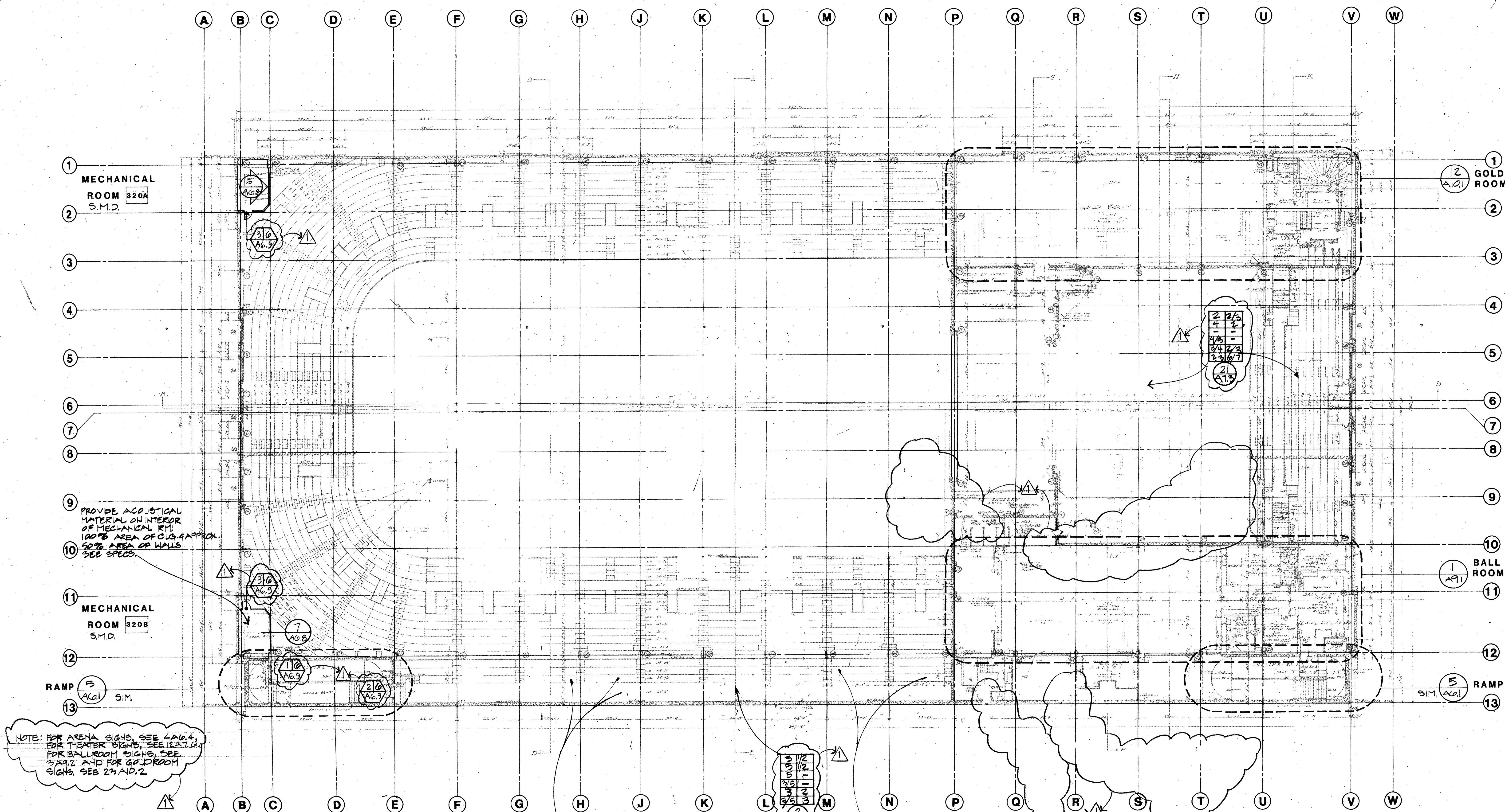
THIRD FLOOR PLAN

64 48 32 24 16 8 4 0

PROJECT NO. 8129 DRAWING NO.

A3.4

DATE 23 JULY 1982



SEAT REPAIR SCHEDULE (continued)

SECTION	SEAT NO.	SEAT	BACK	ARM REST	WALL CONN.
15	F11	x			
	G5	x			
	G7	x			
	J17	x			
	A5		x		
	A7		x		
	A9	x			
	D11	x			
	E5		x		
	E7		x		
	E15		x		
	E17		x		
	E19	x			
	G19	x			
	J17		x		
	J19		x		
	J21		x		
	J23		x		
17	D7		x		
	D9		x		
	F3		x		
	F5		x		
	F7		x		
	F19		x		
	F21		x		
	J1	x			
	J25	x			
19	D13		x		
	D17	x			
	J17	x			
21	A1		x		
	B1	x			
	E1	x			
	F7	x			
	J1	x			
	J5	x			

GALLERY

SECTION	SEAT NO.	SEAT	BACK	ARM REST	WALL CONN.
23	B1			x	
	B9			x	
	B11			x	
	C9			x	
	C11			x	
	D11			x	
	G3			x	
	J25			x	
	K3			x	
	M3			x	
25	B9	x			
	B13	x			
	G19	x			
	H21	x			
	H23	x			
	J11	x			
	J19	x			
2	K2	x			
	K18	x			
	K20	x			
	K22	x			
	M18	x			
	M22	x			
4	L20	x			
	M20	x			
6	L14	x			
	M16	x			
	M18	x			

SECTION	SEAT NO.	SEAT	BACK	ARM REST	WALL CONN.
8	L22	x			
	M6	x			
10	K8	x			
	L10	x			
	L12	x			
	M4	x			
	M10	x			
	M12	x			
12	K6	x			
	K8	x			
	K10	x			
	K12	x			
	M2	x			
	M6	x			
	M12	x			
14	K4	x			
	K20	x			
	L20	x			
	L22	x			
	M14	x			
16	K12	x			
	L16	x			
	L18	x			
18	K18	x			
	L2	x			
	L22	x			
	M14	x			
	J7	x			
	K17	x			
	N27	x			
	M9	x			

The Ratcliff Architects

6117 GROVE ST. OAKLAND, CA 94609
PHONE (415) 852-1972

DRAWN BY *Burns* CHECKED BY *Burns*
PRINCIPAL ARCHITECT BURNS CADWALLADER - C-2389

ASSOCIATED ARCHITECTS:
Ishimaru Design Group
488 25TH ST.
OAKLAND, CA 94612 (415) 839-8313

STRUCTURAL ENGINEERS:
H. J. Degenkolb Associates
350 SANSOME ST., SUITE 500
SAN FRANCISCO, CA 94104 (415) 392-6952

ASSOCIATED STRUCTURAL ENGINEERS:
Jordan-Avent & Associates

MECHANICAL ENGINEERS:
JYA Consulting Engineers
50 BRANNAN ST.
SAN FRANCISCO, CA 94107 (415) 543-8411

ASSOCIATED MECHANICAL ENGINEERS:
Pyramid Designs

ELECTRICAL ENGINEERS:
Ray I. Juachon & Associates
65 SHERIDAN ST.
SAN FRANCISCO, CA 94103 (415) 552-4832

LIGHTING:
Marlene Lee Lighting Design Consulting Engineers
573 MISSION ST.
SAN FRANCISCO, CA 94105 (415) 546-7885

Henry J. Kaiser Convention Center
10-10TH ST.
OAKLAND, CA 94607

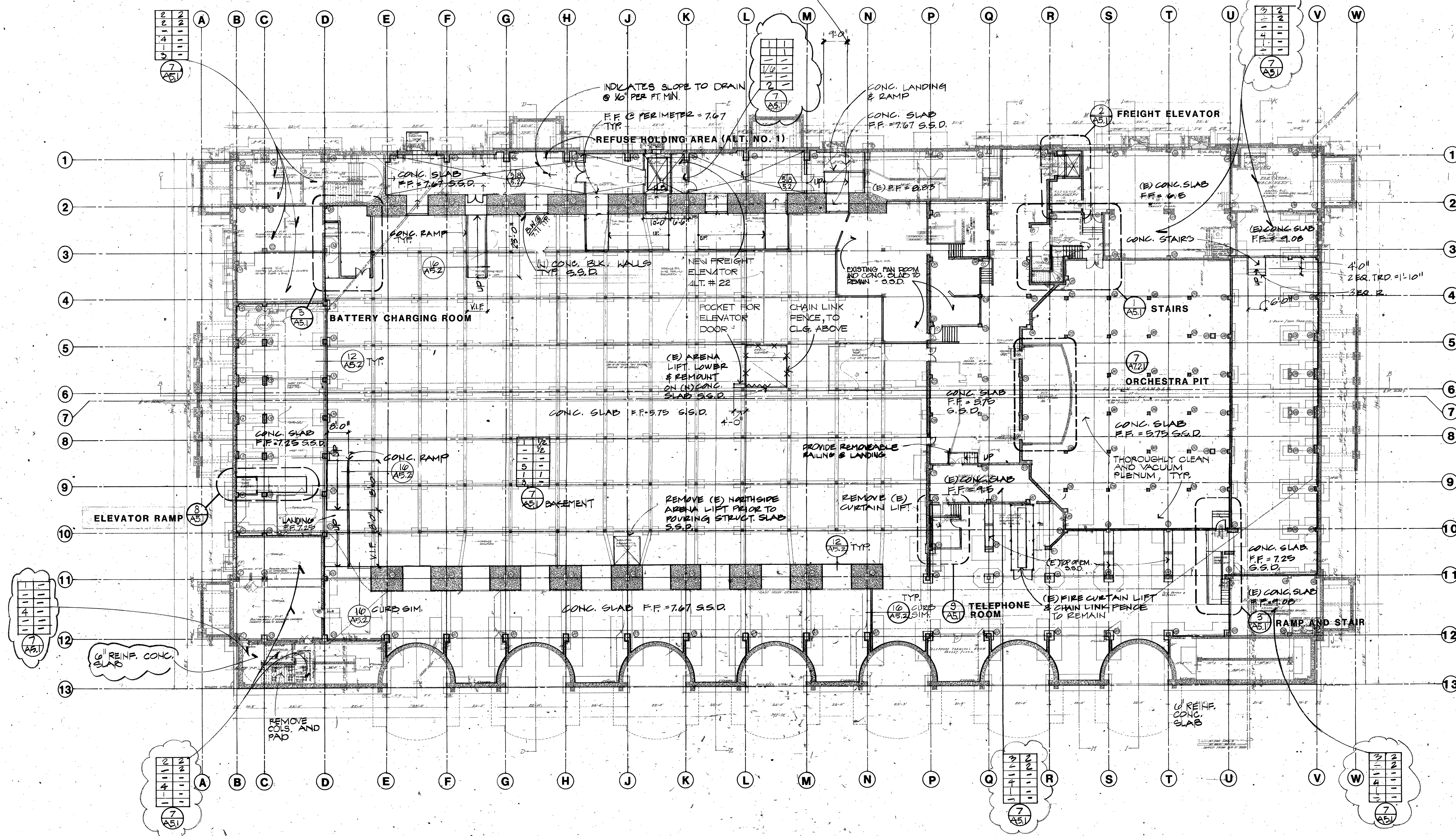
BASEMENT KEY PLAN

64 48 32 24 16 8 0

PROJECT NO. 8129 DRAWING NO.

A3.1

DATE 23 JULY 1982



SHEET GENERAL NOTES

- I. IN AREAS TO RECEIVE (N) CONC. SLAB:
 - A. DEMOLISH ALL NON-CONCRETE, NON-STRUCTURAL FENCES AND PARTITIONS. DO NOT REPLACE UNLESS NOTED ON DRAWINGS.
 - B. SALVAGE ALL EQUIPMENT, FURNISHINGS OR OTHER ITEMS MOUNTED OR STORED IN THE BASEMENT, UNLESS NOTED OTHERWISE.

DRAWN CHECKED
 PRINCIPAL *B. H. Henshaw* PROJECT DIRECTOR
 BY: CADWALLADER 02149

ASSOCIATED ARCHITECTS

Ishimaru Design Group

468 25TH ST.

415) 839-8313

STRUCTURAL ENGINEERS

H. J. Degenkolb Associates

350 SANSOME ST., SUITE 500

(415) 392-6952

ASSOCIATED STRUCTURAL ENGINEERS

Jordan-Avent & Associates

MECHANICAL ENGINEERS

JYA Consulting Engineers

50 BRANNAN ST.

(415) 543-8411

ASSOCIATED MECHANICAL ENGINEERS

Pyramid Designs

ELECTRICAL ENGINEERS

Ray I. Juachon & Associates

65 SHERIDAN ST.

415) 552-4832

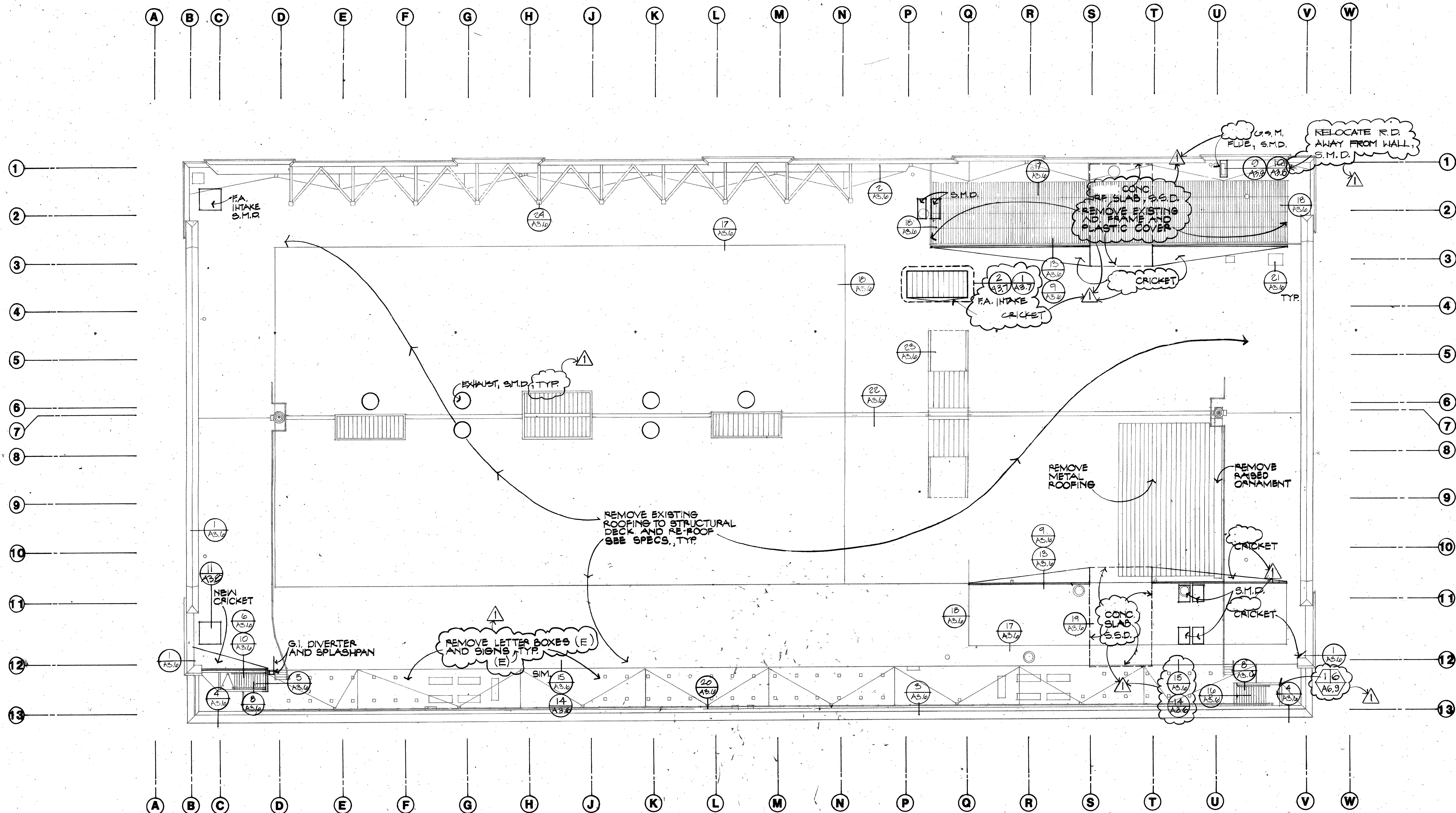
LIGHTING

**Marlene Lee Lighting Design
Consulting Engineers**

573 MISSION ST.

(415) 546-7885

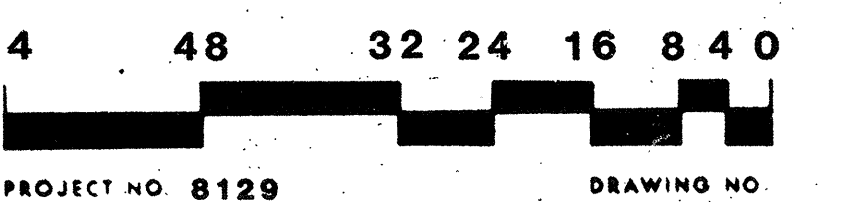
△ 18 AUG 1982 ADDENDUM #1



**Henry J. Kaiser
Convention Center**

10-10TH ST.
OAKLAND, CA 94607

ROOF PLAN



A3.5

DATE **23 JULY 1982**

DRAWN CHECKED
PRINCIPAL *Burles* PROJECT DIRECTOR

ASSOCIATED ARCHITECTS

Ishimaru Design Group

468 25TH ST.
OAKLAND, CA 94612 (415) 839-8313

STRUCTURAL ENGINEERS

H. J. Degenkolb Associates

350 SANSOME ST., SUITE 500
SAN FRANCISCO, CA 94104 (415) 392-6952

ASSOCIATED STRUCTURAL ENGINEERS

Jordan-Avent & Associates

MECHANICAL ENGINEERS

JYA Consulting Engineers

50 BRANNAN ST.
SAN FRANCISCO, CA 94107 (415) 543-8411

ASSOCIATED MECHANICAL ENGINEERS

Pyramid Designs

ELECTRICAL ENGINEERS

Ray I. Juachon & Associates

65 SHERIDAN ST.
SAN FRANCISCO, CA 94103 (415) 552-4832

LIGHTING

Marlene Lee Lighting Design

Consulting Engineers

573 MISSION ST.
SAN FRANCISCO, CA 94105 (415) 546-7885

18 AUG 1982 ADDENDUM #1

**Henry J. Kaiser
Convention Center**

10-10TH ST.
OAKLAND, CA 94607

NORTH ELEVATION

2 24 16 12 8 4 2 0

PROJECT NO. 8129

WING NO

4.1

DATE: **23 JULY 1982**

The Ratcliff Architects

8117 GROVE ST. OAKLAND, CA. 94608
PHONE: (415) 852-1872

DRAWN BY *Berni Levenson* CHECKED BY *PROJECT DIRECTOR*
PRINTED BY *VISIONS ARCHITECTS C 2309*

ASSOCIATED ARCHITECTS:
Ishimaru Design Group
468 25TH ST.
OAKLAND, CA 94612 (415) 839-5313

STRUCTURAL ENGINEERS:
H. J. Degenkolb Associates
350 SANSOME ST., SUITE 500
SAN FRANCISCO, CA 94104 (415) 392-6952

ASSOCIATED STRUCTURAL ENGINEERS:
Jordan-Avent & Associates

MECHANICAL ENGINEERS:
JYA Consulting Engineers
50 BRANNAN ST.
SAN FRANCISCO, CA 94107 (415) 543-8411

ASSOCIATED MECHANICAL ENGINEERS:
Pyramid Designs

ELECTRICAL ENGINEERS:
Ray I. Juachon & Associates
65 SHERIDAN ST.
SAN FRANCISCO, CA 94103 (415) 552-4832

LIGHTING:
Marlene Lee Lighting Design Consulting Engineers
573 MISSION ST.
SAN FRANCISCO, CA 94105 (415) 546-7885

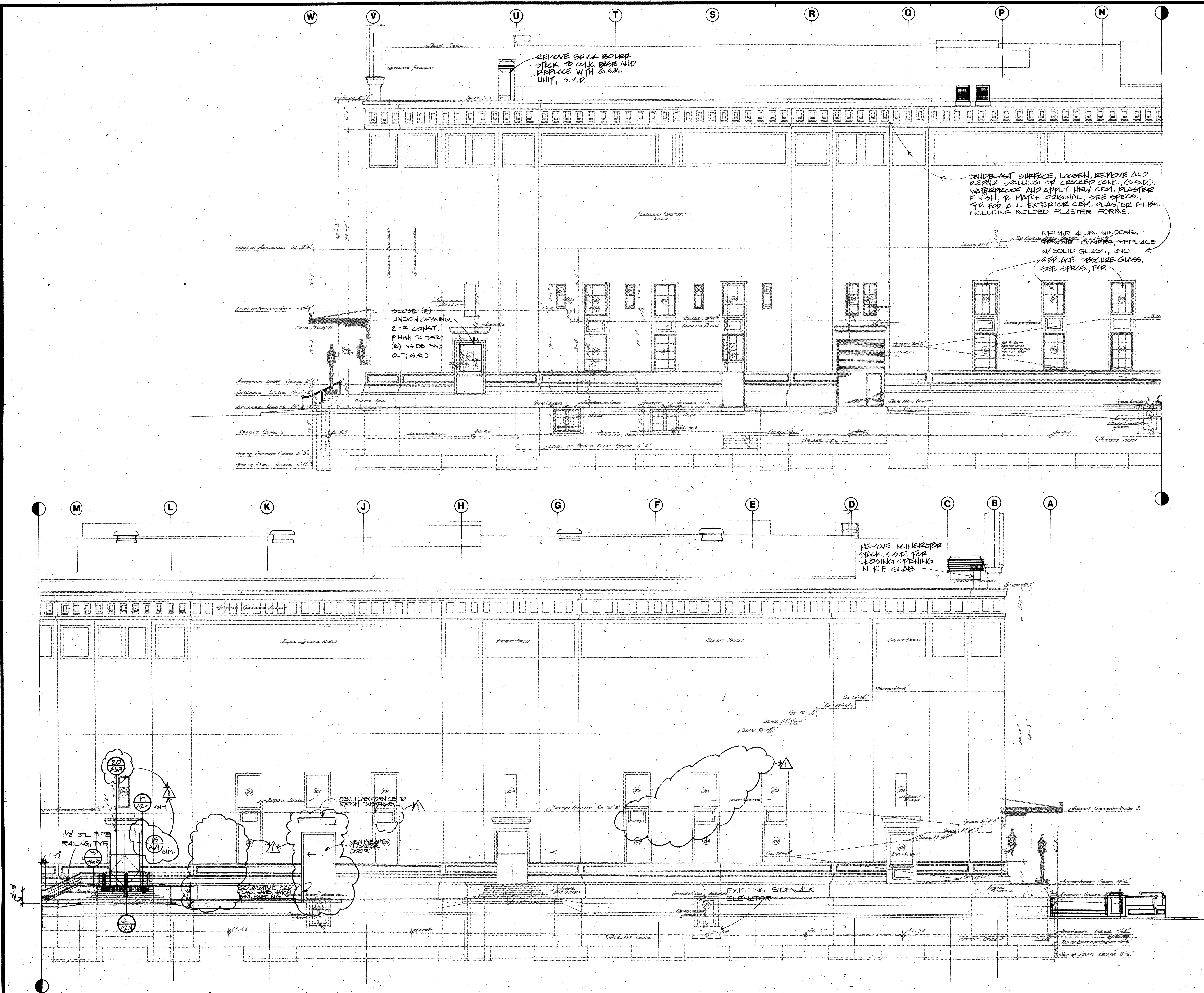
13 AUG. 1982 ADDENDUM #1

Henry J. Kaiser Convention Center
10-10TH ST.
OAKLAND, CA 94607

SOUTH ELEVATION

32 24 16 12 8 4 2 0
PROJECT NO. 8129 DRAWING NO. **A4.2**

DATE: 23 JULY 1982



The Ratcliff Architects

6117 GROVE ST. OAKLAND, CA. 94609
PHONE: (415) 852 1972

DRAWN: *[Signature]* CHECKED: *[Signature]*
PROJECT DIRECTOR: *[Signature]*

ASSOCIATED ARCHITECTS:
Ishimaru Design Group
468 25TH ST.
OAKLAND, CA 94612 (415) 839-8313

STRUCTURAL ENGINEERS:
H. J. Degenkolb Associates
350 SANSOME ST., SUITE 500
SAN FRANCISCO, CA 94104 (415) 392-6952

ASSOCIATED STRUCTURAL ENGINEERS:
Jordan-Avent & Associates

MECHANICAL ENGINEERS:
JYA Consulting Engineers
50 BRANNAN ST.
SAN FRANCISCO, CA 94107 (415) 548-8411

ASSOCIATED MECHANICAL ENGINEERS:
Pyramid Designs

ELECTRICAL ENGINEERS:
Ray I. Juachon & Associates
65 SHERIDAN ST.
SAN FRANCISCO, CA 94103 (415) 552-4832

LIGHTING:
Marlene Lee Lighting Design Consulting Engineers
573 MISSION ST.
SAN FRANCISCO, CA 94105 (415) 546-7885

18 AUG 1982 ADDENDUM #1

Henry J. Kaiser Convention Center
10-10TH ST.
OAKLAND, CA 94607

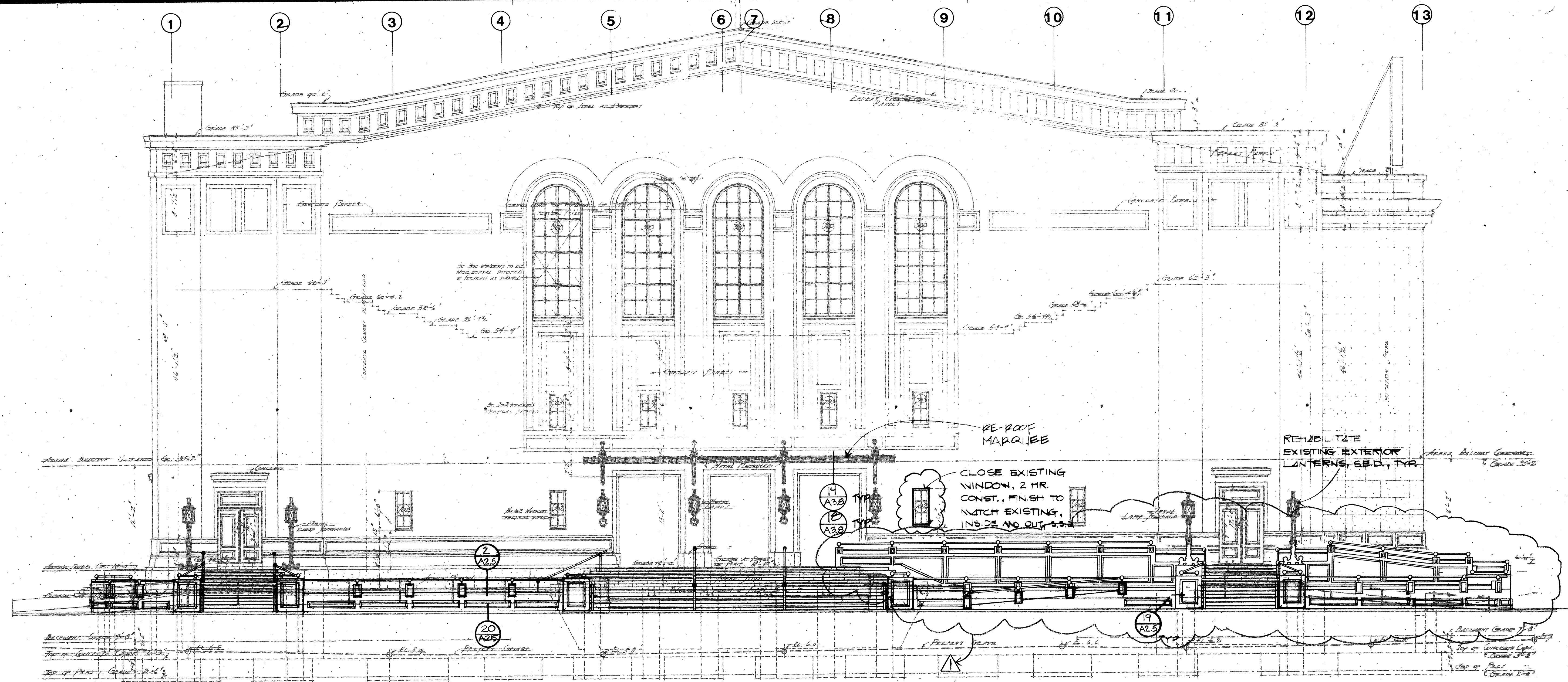
EAST AND WEST ELEVATIONS

32 24 16 12 8 4 2 0

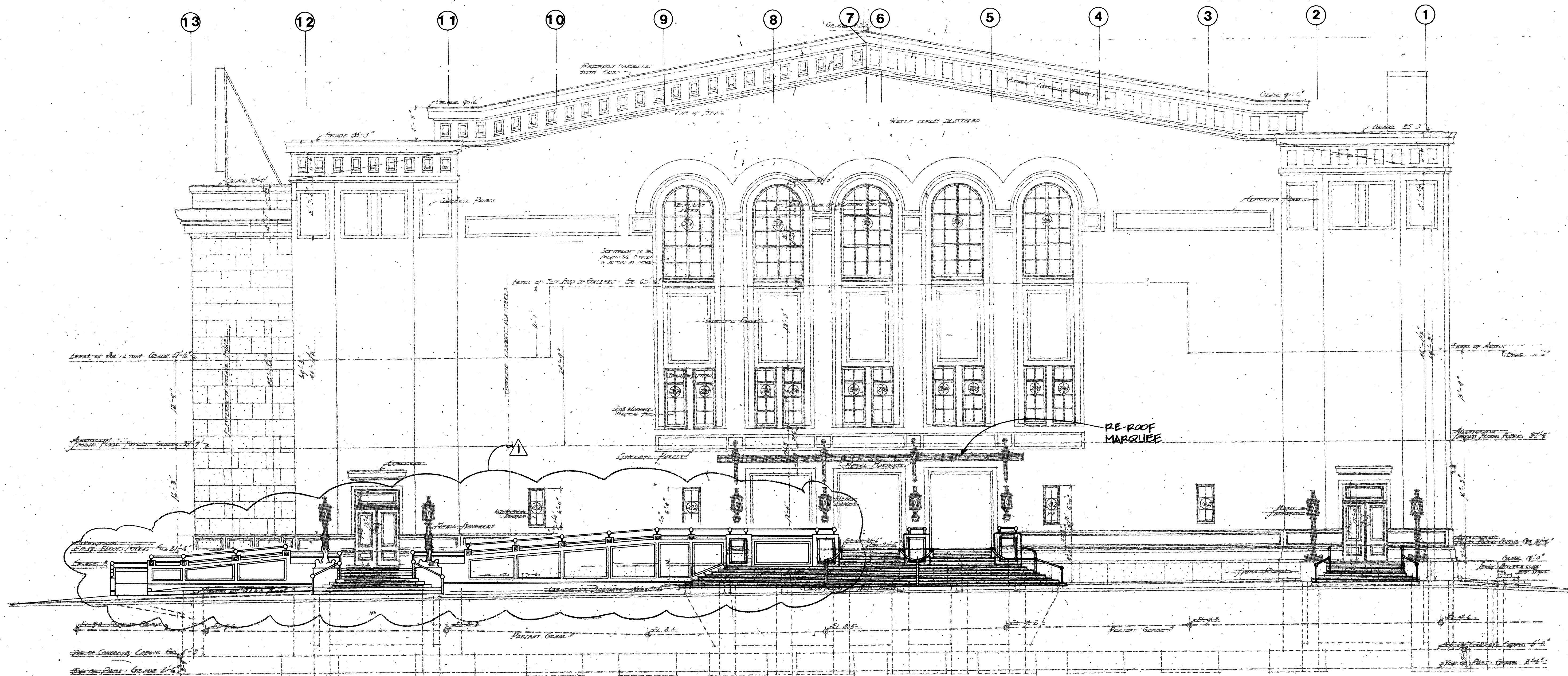
PROJECT NO. 8129 DRAWING NO.

A4.3

DATE 23 JULY 1982



EAST ELEVATION



WEST ELEVATION

8117 GROVE ST. OAKLAND, CA. 94609
PHONE: (415) 652 1972

DRAWN _____ CHECKED _____
PRINCIPAL *Bruno Cadwalader* PROJECT DIRECTOR
Bruno Cadwalader Corp.

STRUCTURAL ENGINEERS

H. J. Degenkolb Associates

350 SANSOME ST., SUITE 500
SAN FRANCISCO, CA 94104 (415) 392-6952

MECHANICAL ENGINEERS

JYA Consulting Engineers

50 BRANNAN ST.
SAN FRANCISCO, CA 94107 (415) 543-8411


ELECTRICAL ENGINEERS

Ray I. Juachon & Associates

65 SHERIDAN ST.
SAN FRANCISCO, CA 94103 (415) 552-4832

18 AUG 1982 ADDENDUM #1

32 24 16 12 8 4 2 0



PROJECT NO. 8129

DRAWING NO

A4.5

DATE **23 JULY 1982**

The Ratcliff Architects

6117 GROVE ST. OAKLAND, CA. 94609
PHONE: (415) 852-1973

DRAWN BY: *[Signature]* CHECKED BY: *[Signature]*
PROJECT DIRECTOR: *[Signature]*

ASSOCIATED ARCHITECTS:
Ishimaru Design Group
468 25TH ST.
OAKLAND, CA 94612 (415) 839-6313

STRUCTURAL ENGINEERS:
H. J. Degenkolb Associates
350 SANSOME ST., SUITE 500
SAN FRANCISCO, CA 94104 (415) 392-6952

ASSOCIATED STRUCTURAL ENGINEERS:
Jordan-Avent & Associates

MECHANICAL ENGINEERS:
JYA Consulting Engineers
50 BRANNAN ST.
SAN FRANCISCO, CA 94107 (415) 543-8411

ASSOCIATED MECHANICAL ENGINEERS:
Pyramid Designs

ELECTRICAL ENGINEERS:
Ray I. Juachon & Associates
65 SHERIDAN ST.
SAN FRANCISCO, CA 94103 (415) 552-4832

LIGHTING:
Marlene Lee Lighting Design Consulting Engineers
573 MISSION ST.
SAN FRANCISCO, CA 94105 (415) 546-7885

18 AUG 1982 ADDENDUM #1

Henry J. Kaiser Convention Center
10-10TH ST.
OAKLAND, CA 94607

LONGITUDINAL SECTION

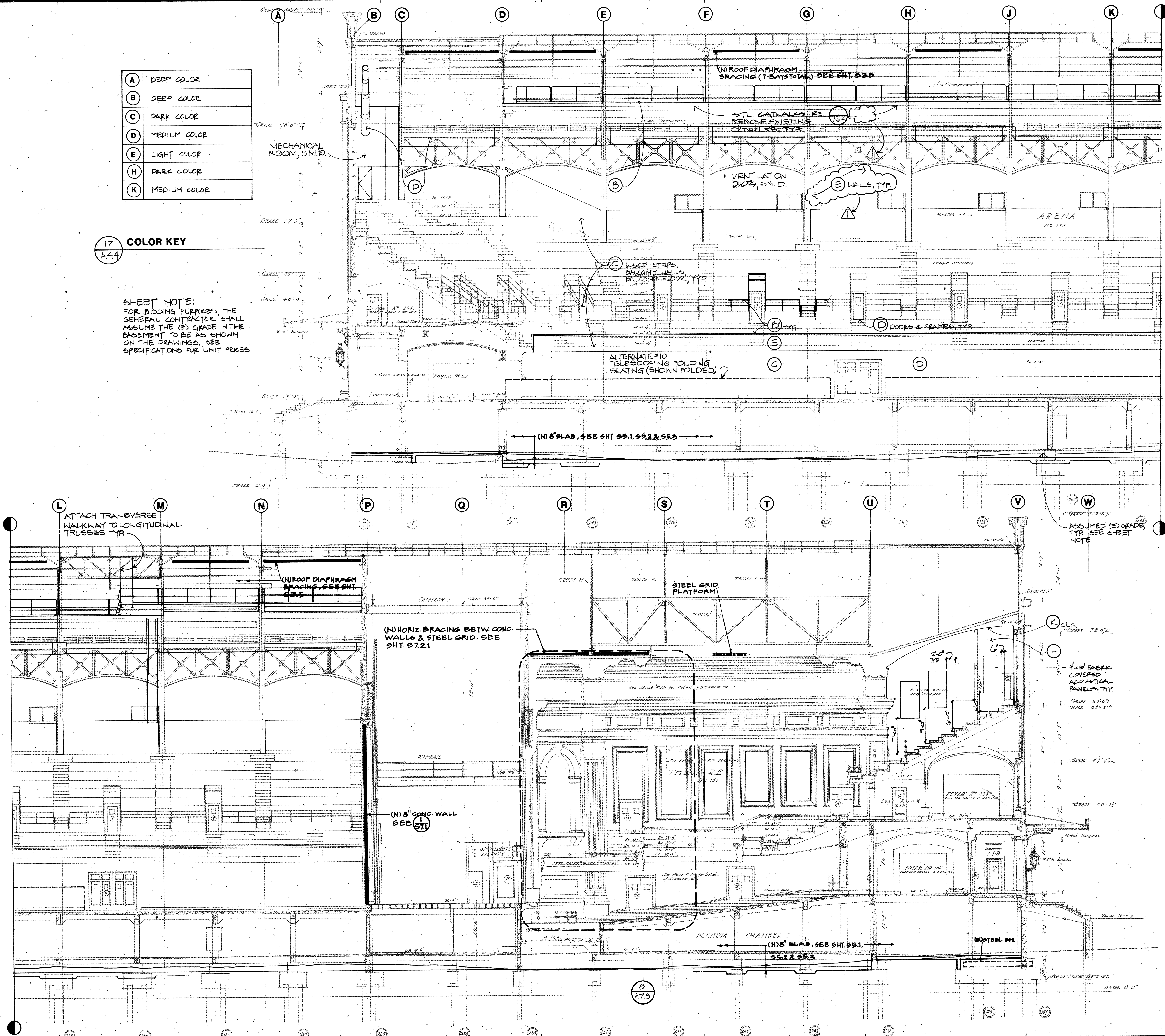
32 24 16 12 8 4 2 0
PROJECT NO. 8129 DRAWING NO. **A4.4**

DATE: 23 JULY 1982

A	DEEP COLOR
B	DEEP COLOR
C	DARK COLOR
D	MEDIUM COLOR
E	LIGHT COLOR
H	DARK COLOR
K	MEDIUM COLOR

17
A4.4
COLOR KEY

SHEET NOTE:
FOR BIDDING PURPOSES, THE
GENERAL CONTRACTOR SHALL
ASSUME THE (B) GRADE IN THE
BASEMENT TO BE AS SHOWN
ON THE DRAWINGS. SEE
SPECIFICATIONS FOR UNIT PRICES



The Ratcliff Architects

8117 GROVE ST. OAKLAND, CA 94609
PHONE (415) 852-1872

DRAWN BY *Paul H. Kaiser* PROJECT DIRECTOR
CHECKED BY *Paul H. Kaiser* PROJECT DIRECTOR
DATE 23 JULY 1982

ASSOCIATED ARCHITECTS

Ishimaru Design Group

488 25TH ST. OAKLAND, CA 94612 (415) 839-8313

STRUCTURAL ENGINEERS

H. J. Degenkolb Associates

350 SANSOME ST., SUITE 500 SAN FRANCISCO, CA 94104 (415) 392-6952

ASSOCIATED STRUCTURAL ENGINEERS

Jordan-Avent & Associates

MECHANICAL ENGINEERS

JYA Consulting Engineers

50 BRANNAN ST. SAN FRANCISCO, CA 94107 (415) 543-8411

ASSOCIATED MECHANICAL ENGINEERS

Pyramid Designs

ELECTRICAL ENGINEERS

Ray I. Juachon & Associates

65 SHERIDAN ST. SAN FRANCISCO, CA 94103 (415) 552-4832

LIGHTING

Marlene Lee Lighting Design

Consulting Engineers

573 MISSION ST. SAN FRANCISCO, CA 94105 (415) 546-7885

10 AUG 1982 APPENDUM #1

Henry J. Kaiser

Convention Center

10-10TH ST. OAKLAND, CA 94607

THEATER TRANSVERSE SECTION

32 24 16 12 8 4 2 0

PROJECT NO. 8129

DRAWING NO.

A4.6

DATE 23 JULY 1982

