

LAKE MERRITT CHANNEL PROJECT

PRELIMINARY ART CONCEPTS

SASAKI & ASSOCIATES • LEWIS DESOTO • JOHN ROLOFF



LEWIS DESOTO JOHN ROLOFF © 2006



OVERVIEW

THE ARTIST TEAM OF LEWIS DESOTO AND JOHN ROLOFF HAVE CREATED AN PRELIMINARY CONCEPTUAL PLAN OF ART PROGRAMS FOR THE OAKLAND ESTUARY CHANNEL.

OUR APPROACH IS SYSTEMIC, MAKING ART THAT FORMS THE BASIS FOR FUTURE CULTURAL PROGRAMMING AND ENGAGES WITH LOCAL/GLOBAL CONVERSATIONS ABOUT CULTURE AND NATURE.

WE HAVE ALSO INTRODUCED IDEAS FOR SURFACE TREATMENTS AND SCULPTURAL ELEMENTS THROUGHOUT THE AREA.

PART OF THE PROJECT IS PAID FOR BY FUNDS FROM MEASURE DD.
OTHER PARTS OF THE ART PROGRAM LIE OUTSIDE THE PURVIEW OF
MEASURE DD AND CONNECT DIRECTLY WITH PERALTA COMMUNITY
COLLEGE DISTRICT AREAS.

IN ORDER FOR THIS PLAN TO BE DEVELOPED FURTHER, IT IS VITAL
THAT PCCD BECOME INVOLVED IN THE EVOLUTION OF THESE EARLY
IDEAS.



LAKE MERRITT
LAKE MERRITT

LANEY COLLEGE EAST
LANEY COLLEGE EAST

LANEY COLLEGE WEST
LANEY COLLEGE WEST

SAN FRANCISCO
BAY

ART CONCEPTS

THE ARTIST TEAM OF LEWIS DESOTO AND JOHN ROLOFF DEVELOPED A
STRUCTURE OF PROGRAMS, SURFACES AND INTEGRATED FEATURES.

MANY OF THESE PROGRAMS CAN BE USED AND INTEGRATED BY THE PCCD
FOR EDUCATIONAL PURPOSES.

MANY OF THE PROJECTS IN INTEGRATED FEATURES ALLOW THESE
PROGRAMS TO BE REALIZED.

QUESTIONS INFORMING OUR PROCESS

"CONSIDERING MAYOR-ELECT DELLUMS' VISION FOR OAKLAND AS A GLOBAL MODEL, IN WHAT WAY COULD THE ESTUARY CHANNEL SITE BE INSTRUMENTAL IN ENGAGING OAKLAND IN THE CRITICAL CULTURAL AND NATURAL QUESTIONS OF OUR TIME AT THE LOCAL AND GLOBAL LEVELS?"

"COULD A MAJOR LANDMARK FEATURE, SUCH AS A SCULPTURE, BRIDGE OR OTHER STRUCTURE BE CONSIDERED AN ASSET/DESTINATION POINT AND CATALYST, FOR THE ESTUARY CHANNEL PROJECT?"

"IF THE ESTUARY CHANNEL SITE WERE TRANSFORMED INTO A LOCUS FOR INNOVATIVE CULTURE AND NATURE-BASED FESTIVALS, PROGRAMS AND RESEARCH, WHAT KIND OF EVENTS AND PROGRAMS ARE POSSIBLE AND THROUGH WHAT PROCESS?"

"COORDINATING WITH THE PERALTA COMMUNITY COLLEGES AND THE LARGER COMMUNITY, WHAT INNOVATIVE PROGRAMS, INTEGRATING EDUCATION ABOUT CULTURE AND NATURAL SYSTEMS ARE POSSIBLE TO IMPLEMENT AT THE ESTUARY CHANNEL SITE?"

LAKE MERRIT CHANNEL PROJECT APPLICATIONS

SASAKI & ASSOCIATES LEWIS DESOTO JOHN ROLOFF

PROGRAMS

Cultural Blessings

Flags Festival

(Oakland Museum, Laney College, Oakland Cultural Affairs, Oakland Library)

Nature/Alternative Energy
Sculptural Interventions

(To counter current sited sculpture)

Demographic Evolutions

(Sound/Music/Cuisine/Dance/Sports)

Clean Marine

(Competition for solar powered
craft on Lake Merritt)

Virtual

Festivals and Estuary Database

Oxygen/Toxic - Events

(Clean up the Lake and Estuary, oxygenation
sponsored by local colleges/universities)

SURFACES

Fencing

(Water jet cut aluminum
Metal Screening/Woven material
Mirrored, Solar, Systemic)

Walls:
Bridges/Channels

(Concrete Casting
Sand blasting
Abrasive
Additive/Subtracting
Sheathing/Mirroring
Projection
Specialty Concrete/Stone)

Signage

(Enameled Steel
Photography
Lithography
Computer Applied vinyl and inks
LCD, Jumbotron)

Water

(Reflections
Light Flotillas)

INTEGRATED FEATURES

Flag System(s)

(Signification Flags/Integrated flag, lighting
and signage - Solar & wind energy driven)

Bridge/Channel

(Elliptical/Tidal connections -
Global Warming/Tidal markers
Machinic expression)

Plantings and Soil

(Demographic/Festival Plantings:
from Native to Trans-indigenous)

Lighting

(Metaphors of light spectrums)

Water/Oxygen

(Aeration Systems)

Communication

(WiFi System, Television & Radio
Narrative/Virtual Environments)

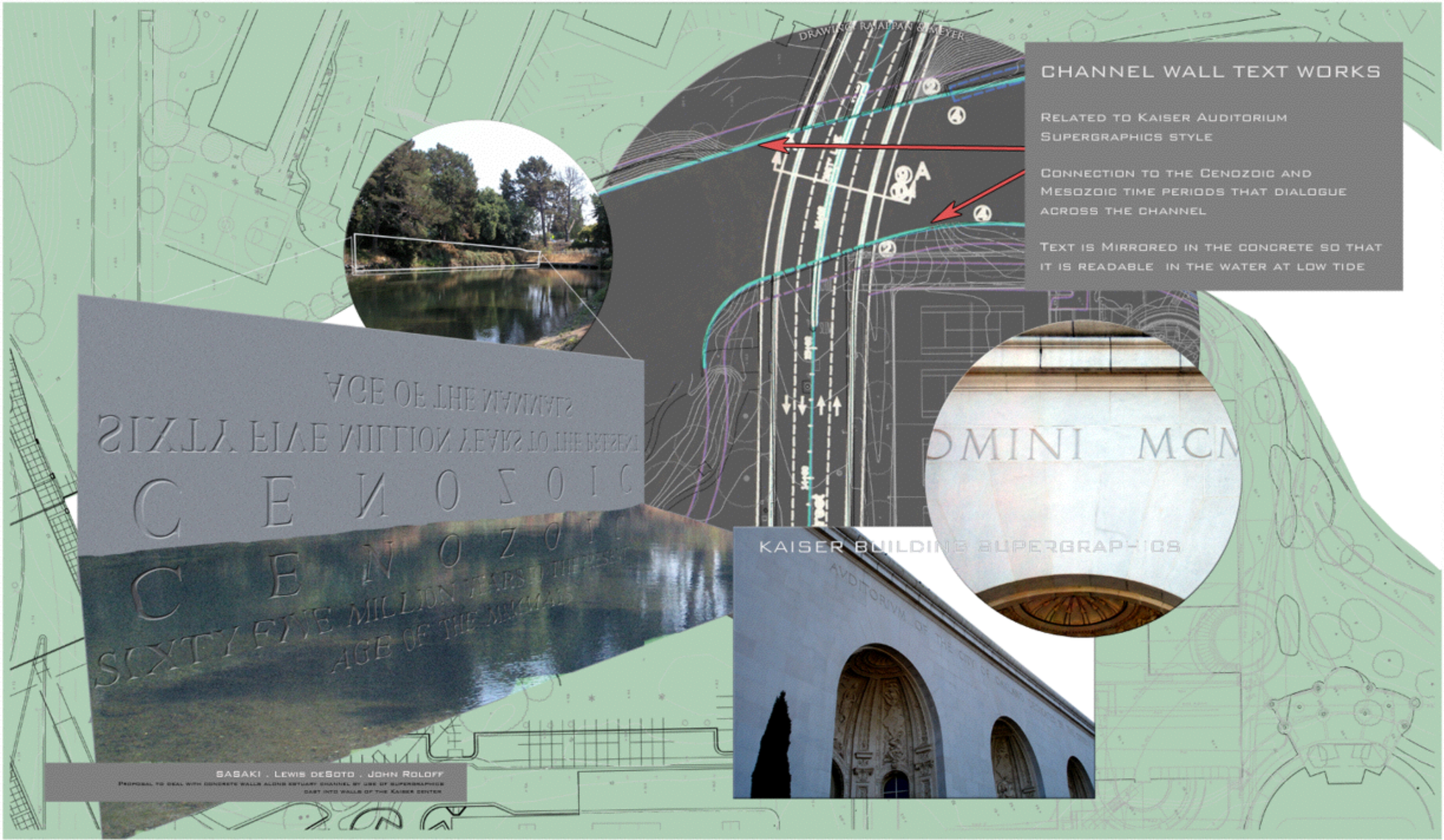
Emergency Systems

CHANNEL WALL TEXT WORKS

DESOTO/ROLOFF PROPOSE LARGE INVERTED TEXT PANELS BENEATH THE
10TH ST. BRIDGE DESIGNED TO BE READ AS REFLECTIONS ON THE WATER
SURFACE.

THE TEXT REFERENCES THE GEOLOGIC AGE OF THE STRATIGRAPHIC AND
TECTONIC STRUCTURES BENEATH THE ESTUARY SITE.

THE TEXT DESIGN REFERENCES THE KAISER AUDITORIUM STYLE OF
SUPERGRAPHICS.



CHANNEL WALL TEXT WORKS

RELATED TO KAISER AUDITORIUM
SUPERGRAPHICS STYLE

CONNECTION TO THE CENOZOIC AND
MESOZOIC TIME PERIODS THAT DIALOGUE
ACROSS THE CHANNEL

TEXT IS MIRRORED IN THE CONCRETE SO THAT
IT IS READABLE IN THE WATER AT LOW TIDE

AGE OF THE MAMMALS
SIXTY FIVE MILLION YEARS TO THE PRESENT
CENOZOIC
CENOZOIC
SIXTY FIVE MILLION YEARS TO THE PRESENT
AGE OF THE MAMMALS

DOMINI MCM

KAISER BUILDING SUPERGRAPHICS

SASAKI . LEWIS DESOTO . JOHN ROLOFF
PROPOSAL TO DEAL WITH CONCRETE WALLS ALONG ESTUARY CHANNEL BY USE OF SUPERGRAPHICS
CAST INTO WALLS OF THE KAISER CENTER



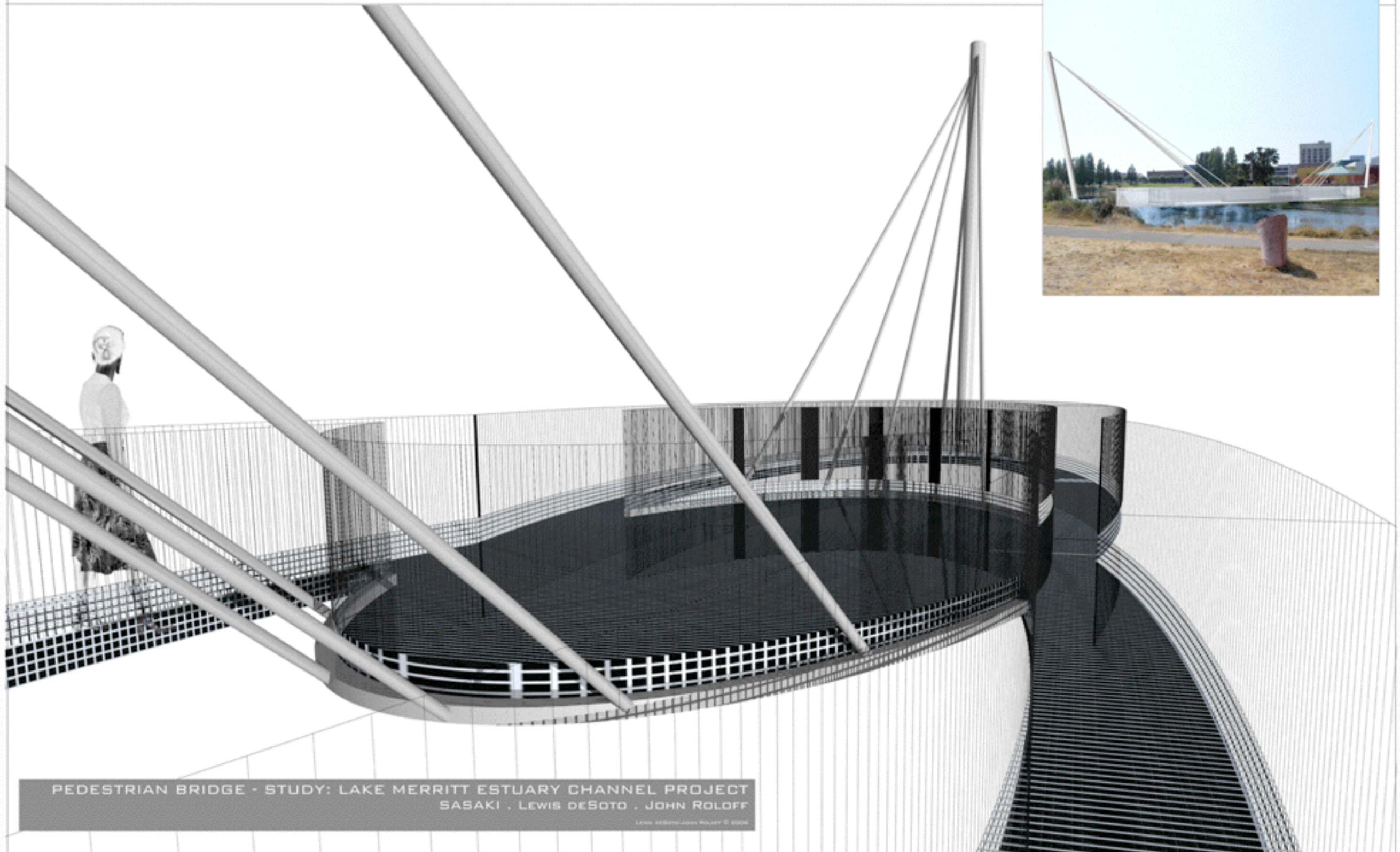
PEDESTRIAN/BICYCLE BRIDGE

THE SMALL PEDESTRIAN BRIDGE THAT CURRENTLY CROSSES OVER THE ESTUARY CHANNEL DOES NOT MEET ADA REQUIREMENTS.

DESOTO/ROLOFF HAVE PROPOSED CREATING A SIGNATURE DESIGN BRIDGE, THAT CREATES THE FEELING OF TRANSPARENCY AND SYNESTHESIA AS ONE MOVES ACROSS IT.

THIS DESIGN CREATES TWO PATHS, ONE FOR BICYCLES AND ONE FOR PEDESTRIANS.

BRIDGE STUDIES: PHENOMENA: MOIRÉ/MIRAGE/EPHEMERA: SYNESTHESIA



PEDESTRIAN BRIDGE - STUDY: LAKE MERRITT ESTUARY CHANNEL PROJECT
SASAKI . LEWIS DESOTO . JOHN ROLOFF

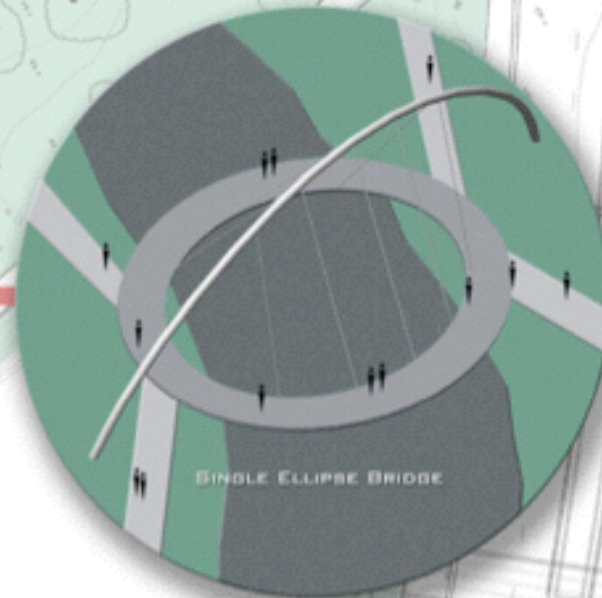
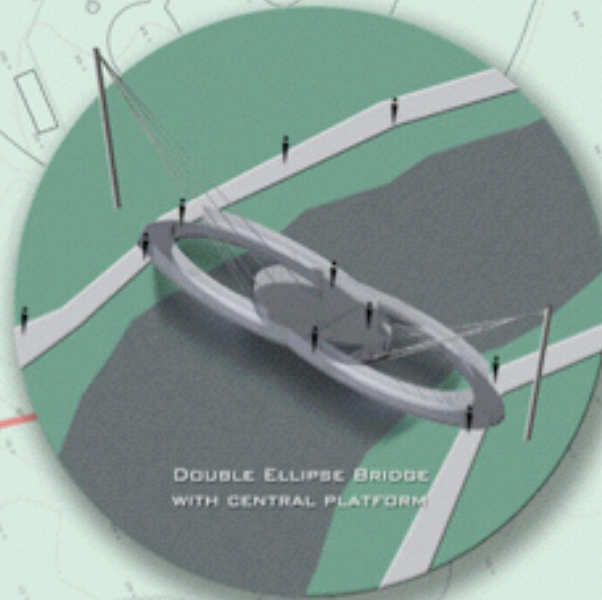
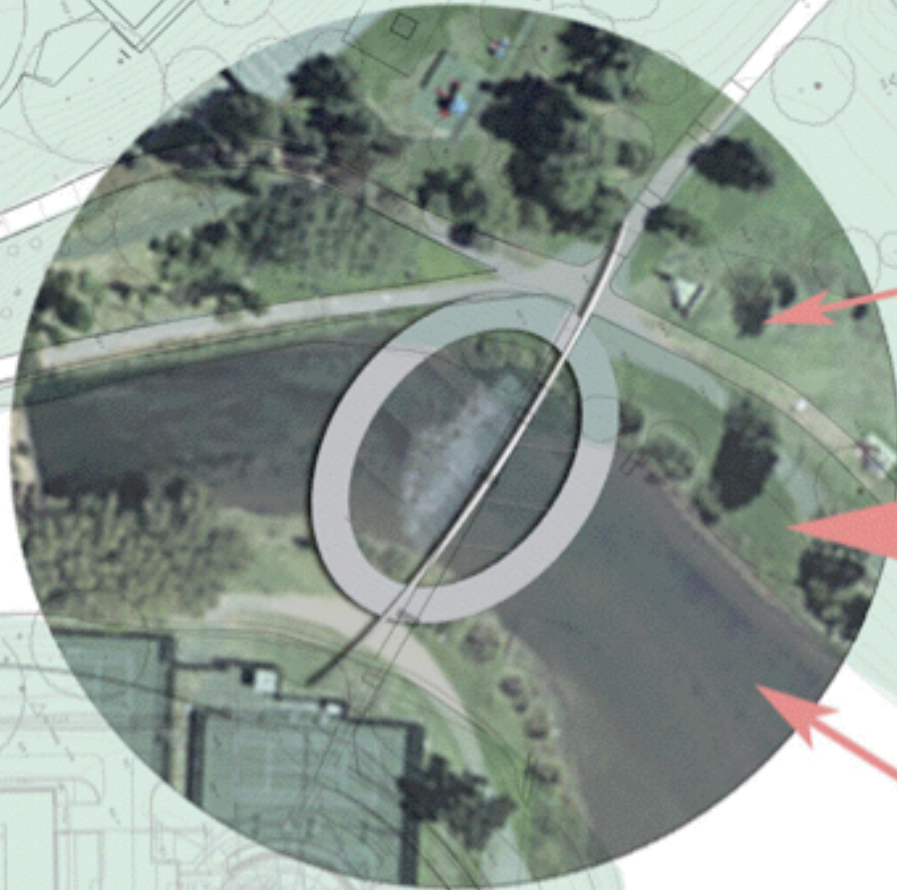
LEWIS DESOTO JOHN ROLOFF © 2004

PEDESTRIAN/BICYCLE BRIDGE (CONT.)

IN ONE OF THE DESIGNS A CENTRAL PLATFORM ALLOWS FOR OBSERVATION/
CONTEMPLATION AND AS A STAGE FOR CULTURAL PERFORMANCES.

THE BRIDGE CAN ALSO BECOME A WATER AERATION DEVICE AND A
PLATFORM FOR EXPERIMENTS FOR THE SCIENCES.

THIS SIGNATURE STYLE BRIDGE WOULD BRING MORE OF THE PUBLIC IN
CONTACT WITH THE PCCD AS IT BECOMES A SIGNIFICANT VISUAL
LANDMARK, A DESTINATION.



CURRENT BRIDGE IS TOO
NARROW FOR PEDESTRIANS
AND BICYCLES TO SHARE

THREE PEDESTRIAN BRIDGES

ELLIPSE: TIDAL METAPHOR

ADA COMPLIANT

PEDESTRIAN AND BIKING FUNCTIONS

SEE THROUGH STAINLESS OR GALVA-
NIZED GRATINGS ALLOW TO VIEW WATER
BELOW

OXYGENATION FUNCTIONS SUCH AS
WATER FALLING FROM SUPPORTS OR
PLATFORMS AS TIDE COMES IN

PLATFORMS FOR PERFORMANCES, DANCE,
MUSIC

CREATES A DESIGN/DESTINATION
FUNCTION

ELIMINATES CONCRETE SUPPORTS IN
WATER

PEDESTRIAN BRIDGE STUDY: LAKE MERRITT ESTUARY CHANNEL PROJECT SASAKI . LEWIS DESOTO . JOHN ROLOFF

LEWIS DESOTO/JOHN ROLOFF © 2006

PROPOSAL TO CREATE A DESIGN/DESTINATION PEDESTRIAN BRIDGE TO REPLACE CURRENT NARROW BRIDGE

PLANTING SYSTEMS

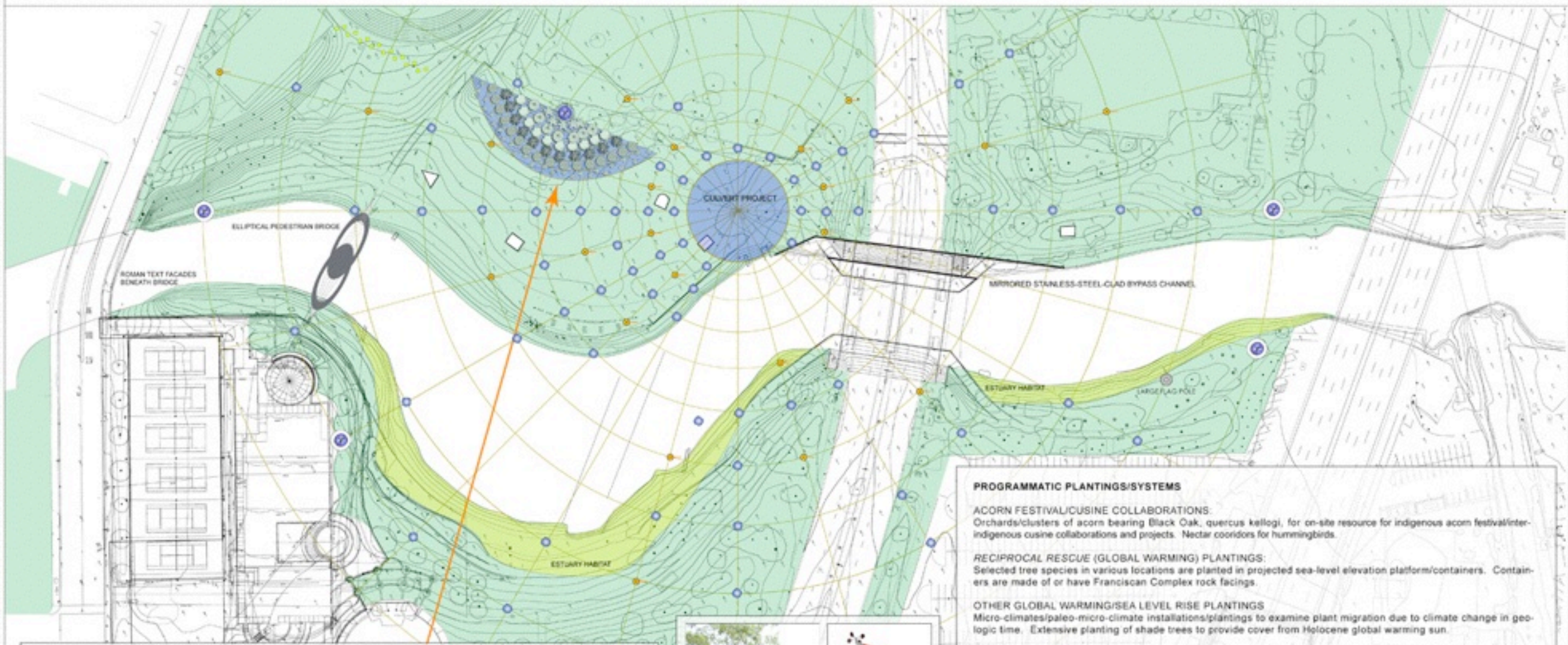
A DEMOGRAPHIC GARDEN IS PROPOSED THAT LINKS THE DIVERSE PEOPLES OF OAKLAND TO PLANTINGS THAT RETURN THEM TO THEIR ORIGINS; CONTAINING MEDICINAL AND SYMBOLIC PLANTS FROM VARIOUS GLOBAL SOURCES.

THIS GARDEN WOULD BE USED BY THE HORTICULTURAL AND OTHER SCIENCES FOR RESEARCH AND MAINTENANCE.

BLACK OAK, A PRIMARY FOOD SOURCE OF THE OHLONE PEOPLE, IS PLANTED AT THE CENTER OF THIS GARDEN, AND IN A RADIATING PATTERN ACROSS THE SITE INTERSPERSED WITH A FLAG/INFORMATION SYSTEM RELATED TO PROGRAMS AND FESTIVALS.

OTHER PLANTING RELATE TO ECOLOGY, PALEOCLIMATES AND GLOBAL INTERACTIONS/CONVERSATIONS.

STUDY: PLANTINGS: CULTURE/CLIMATE SYSTEMS



DEMOGRAPHIC GARDEN:

Plantings that reflect the historical progression and diversity of Oakland's cultural population connected formally and programatically to other plantings and spaces. Oakland's fauna and non-human species may also be included: present and extinct.

A black oak at the center representing the First Nation, Ohlone Tribes.

Radiating in historical succession, native plants from Oakland's cultural homelands.



- BLACK OAK (QUERCUS KELLOGGII)
- BLACK OAK (QUERCUS KELLOGGII)
- BLACK OAK (QUERCUS KELLOGGII)
- BLACK OAK (QUERCUS KELLOGGII)



Hummingbird played an important role in the Ohlone coastal story.

PROGRAMMATIC PLANTINGS/SYSTEMS

ACORN FESTIVAL/CUISINE COLLABORATIONS:

Orchards/clusters of acorn bearing Black Oak, *quercus kelloggii*, for on-site resource for indigenous acorn festival/inter-indigenous cuisine collaborations and projects. Nectar corridors for hummingbirds.

RECIPROCAL RESCUE (GLOBAL WARMING) PLANTINGS:

Selected tree species in various locations are planted in projected sea-level elevation platform/containers. Containers are made of or have Franciscan Complex rock facings.

OTHER GLOBAL WARMING/SEA LEVEL RISE PLANTINGS

Micro-climates/paleo-micro-climate installations/plantings to examine plant migration due to climate change in geologic time. Extensive planting of shade trees to provide cover from Holocene global warming sun.

As the lower Eocene progressed the climate of central California became warmer and by the end of the lower Eocene had become subtropical. The Sierra Nevada had been worn down to a surface of low relief and was covered by a deep mantle of decomposed debris, the result of deep chemical weathering under hot humid conditions. (Tanner, California Division of Mines Bulletin 154, 1951)



RECIPROCAL RESCUE TREE STRUCTURE
Serpentine facing



Eocene
Recent micro-climate installation, Santa Rosa, CA, 1999. Moss, oak, fern, stone
overlaid on geological system



PRIMARY FRANCISCAN COMPLEX ROCK TYPES

FRESHWATER CULVERT

DESOTO/ROLOFF ALSO PROPOSE THAT A FRESH WATER CULVERT BE OPENED TO ALLOW THE GROWING OF FRESH WATER REEDS THAT CAN BE UTILIZED TO LEARN AND PRESERVE THE PRACTICE OF THE OHLONE PEOPLE, USED FOR MILLENNIA TO MAKE BASKETS AND OTHER CULTURAL OBJECTS.

THE FRESHWATER CULVERT AREA IS RELATED TO LARGER DEMOGRAPHIC PLANTINGS AND BECOMES A CENTER FOR PROGRAMING AND FESTIVALS.

DEMOGRAPHIC GARDEN CONNECTION

BLACK OAK PLANTING CONNECTION



SOURCE:
WHEN THE WORLD ENDED, HOW HUMMINGBIRD,
OCT FINE, HOW PEOPLE WERE MADE - RUMISEN
ORIGINE STORIES, WRITTEN AND ILLUSTRATED BY
ERIN YAMANE DYKE, 2702 MATHIAS STREET,
BERKELEY, CA

HERSELF OF RUMISEN ORIGINE ANCESTRY, WHO IS AN
ARTIST AND DESIGNER, AS WELL AS BASKET WEAVER
AND PARTICIPANT IN THE MONTEREY BAY CULTURAL
HISTORY AND LANGUAGE RETRIEVAL PROJECT.

IN THE FIRST OF THE 3 STORIES HERE, THE WORLD IS
DROWNED IN A FLOOD. SOME BIRDS - EAGLE, THE
LEADER, CROW, RAVEN, AND HUMMINGBIRD GET HANG
OF USE ONE OF EAGLE'S
FEATHERS, DIVE DEEP UNDER THE WATER AND PULL THE
EARTH BACK UP.

CONCEPT NOTES:

DEVELOP METAPHOR OF CREATION STORY WITH TRIBUTARY/DRAINAGE SYSTEM ENTERING ESTUARY
THROUGH CULVERTS. REVEALING OF SYSTEM/TRANSPARENT-GRATED WALKS AND AND HORIZON-
TAL SURFACES.

CONSIDER INTEGRATION OF POW WOW, FESTIVAL, MEETING SPACE, MODULAR/FLEXIBLE COVERED
SPACE.

*CONSIDER INTEGRATION/DEVELOPMENT OF CULTURAL PLANTING ELEMENTS. MULTIPLE/ORCHARD
PLANTINGS OF BLACK OAK (QUERCUS KELLOGGII) FOR ON-SITE RESOURCE FOR INDIGENOUS ACORN
FESTIVAL/INTER-INDIGENOUS CUISINE COLLABORATIONS AND RITUALS.

CULTURE/CULVERT STUDY: LAKE MERRITT ESTUARY CHANNEL PROJECT SASAKI . LEWIS DESOTO . JOHN ROLOFF

LEWIS DESOTO/JOHN ROLOFF © 2008

PROPOSAL TO OPEN UP FRESH WATER CULVERT, INCREASE REED PLANTINGS FOR BASKET PRODUCTION.
BASKET DESIGN MESH PLATFORM SUSPENDED OVER CULVERT AREA WITH COSMOLOGY STORY PRINTED ON RAILINGS.

CULTURE/NATURE SIGNIFICATION SYSTEMS

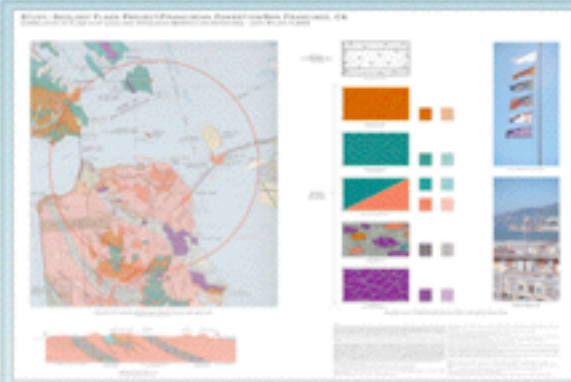
A RANGE OF SYSTEMS AND MARKERS TO REPRESENT AND CELEBRATE CULTURAL AND NATURAL RELATIONSHIPS: OAKLAND SISTER CITIES, CLIMATIC CHANGE, GEOLOGIC BIOLOGIC AND COMMUNITY-BASED SUBJECTS.

A FLAGPOLE SYSTEM OF DIFFERENT SCALES: A 100 METER HIGH POLE WITH AN ENERGY-PRODUCING FLAG TO INTEGRATED FLAG, SEATING, WIND POWERED LIGHTING AND INFORMATION KIOSKS DISTRIBUTED THROUGHOUT THE SITE.

FLAGS DESIGNED BY PCCD AND COMMUNITY FOR ROTATING EVENTS AND FESTIVALS ARE RELATED TO FLAG DESIGN AND CREATION.

EXCHANGE PROGRAMS BETWEEN OAKLAND SISTER CITIES, SCIENTIFIC RECORDING AND MARKING INSTRUMENTS/STRUCTURES, WATER OXYGENATION SYSTEMS, ALTERNATIVE ENERGY AND INTER-SPECIES RELATIONSHIP/MIGRATION PROJECTS.

STUDY: CULTURE/NATURE SIGNIFICATION SYSTEMS



IMAGES TO LEFT - EXAMPLE FLAG SYSTEM

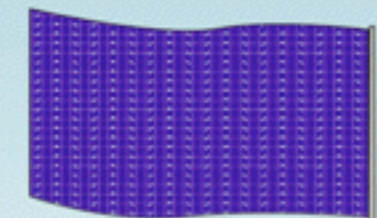
Roloff Geology Flag system and one of several previous implementations - flexible taxonomy of flag designs using geologic mapping symbology capable of indicating almost all geologic rock-types and structures and related architectural/geologic materials.

Other systems for flag signification can be similarly developed.

LARGE FLAG POLE - HEIGHT-CORRELATED TO
SIGNIFICANT STRATA/AQUIFER GEOLOGIC FEATURE
BENEATH SITE:

ROTATING, CHANGING, EVOLVING DESIGNS/MEANINGS

Solar-Electrical Generating Fabric - shown to right
Event Signification
Program Signification
Sea Level/Climatic Change
Deep Geology
Species Signification (migration/extinction)
Cultural, tattoo's/music/art



FLAG POLE/LIGHTING/WORK ELEMENT

Multi-use element for general site lighting, signification, and information.

Lighting column/pole uses LCD's. Delinated light wave-length system being explored.

Different forms and sizes may be used on bridges or for special situations.

Instruments for weather or wi-fi transmission
situated on top or housed within.

Flag shown: Roloff SF Civic Center geology
flag indicating Franciscan Complex struc-
tures beneath site.



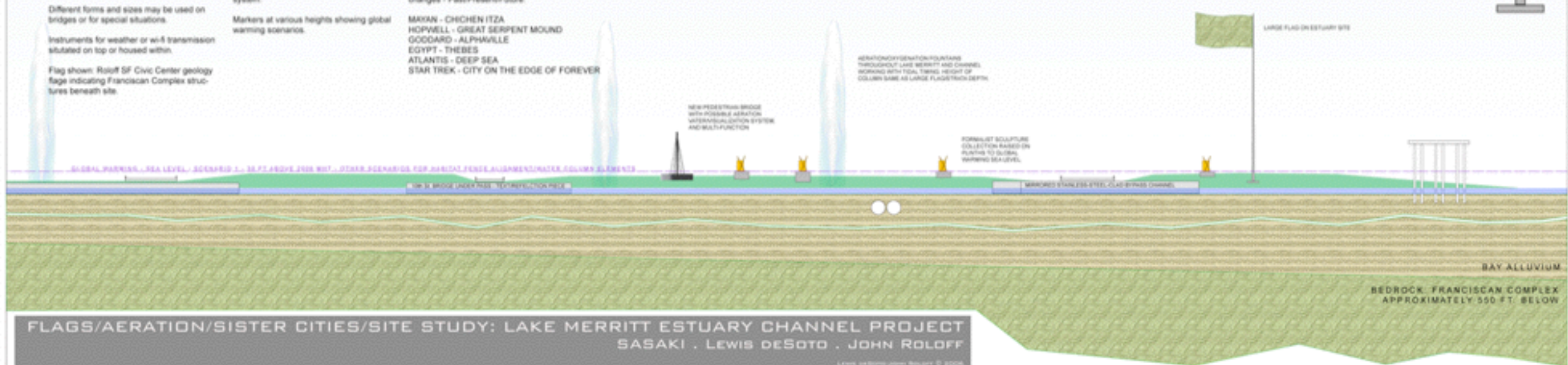
DEPTH TO BEDROCK (FRANCISCAN COMPLEX)

Contour map showing depth of alluvium to bedrock beneath East Bay sites. Estuary site is approximately 550 ft. above the Franciscan Complex.



LARGE MEXICAN FLAG, ZOCALO, MEXICO CITY

Flag unfurled each day above the Zócalo plaza in Mexico City, flags of similar size are in other cities in Mexico and world wide.



7TH STREET BRIDGE - BYPASS CHANNEL

THE PASSAGES BENEATH THE 7TH STREET BRIDGE ARE BEING REDESIGNED TO INCREASE THE TIDAL FLOW BETWEEN LAKE MERRITT AND THE OAKLAND ESTUARY.

DESOTO/ROLOFF PROPOSE A SERIES OF OPTICALLY EXPANDING, FLOW DEMARKATION TREATMENTS TO MAKE THE PEDESTRIAN AND SMALL CRAFT JOURNEY THROUGH THESE PASSAGES A PHENOMENOLOGICAL EXPERIENCE AND ADVENTURE.

CAREFULLY ARRANGED, MIRRORED STAINLESS STEEL PANELS AND LIGHTING, OPTICALLY EXPAND SPACIAL AND HYDROLOGIC PHENOMENA. LININGS OF CAST FLOW STRUCTURES MIMIC HYDRO/GEOLOGIC FORMATIONS.

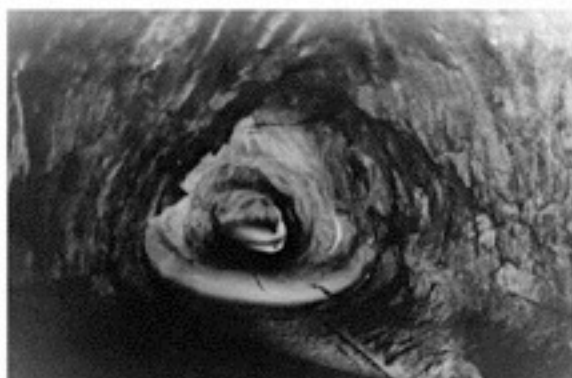
A POTENTIAL SITE FOR A MODEL TIDE-GENERATED ENERGY SYSTEM.

STUDIES: BYPASS CHANNEL AS PHENOMENOLOGICAL/TURBIDIC ENERGY SPACE

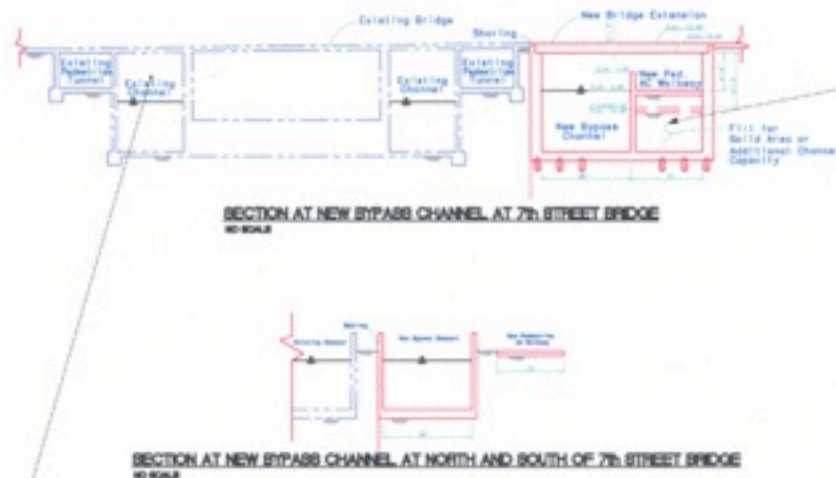
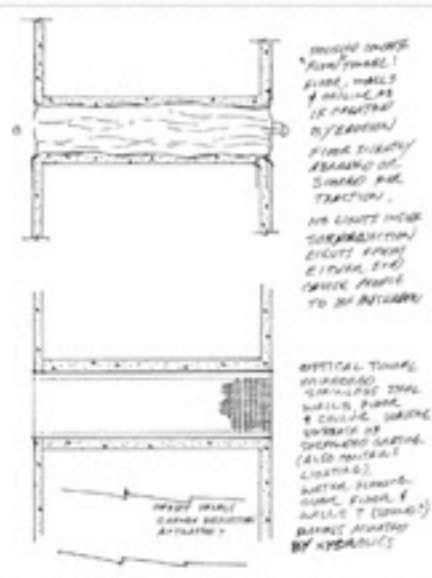
FLOW - ERRODED/FORMED SURFACES



SEDIMENTARY CASTS OF TURBIDITY-FORMED STRUCTURES



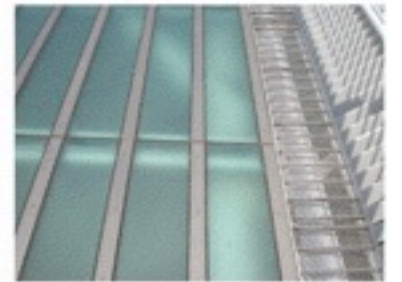
LAVA TUBE FORMED BY FLOWING LAVA



BYPASS CHANNEL PLAN AND SECTIONS
Detail from: 10th & 7th Street Channel Improvements
Raggen & Meyer Consulting Engineers

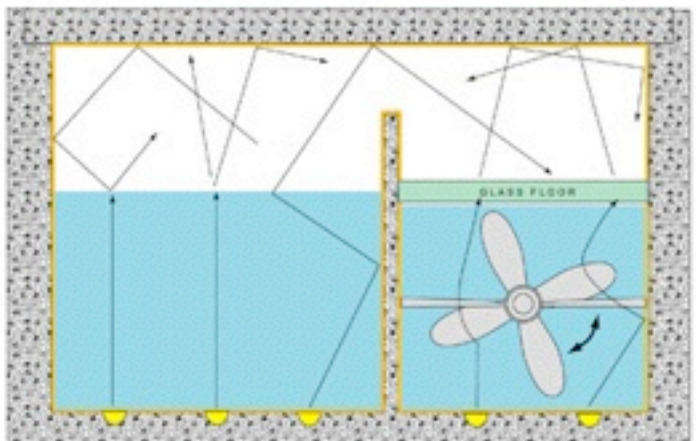


TIDAL ENERGY SYSTEM BENEATH GLASS WALKWAY.
MIRROR-LINED, UPLIT, TURBULENCE SPACE.
WORKS WITH INCOMING AND OUTGOING TIDE AND
SOLAR ENERGY ELEMENTS ON SITE

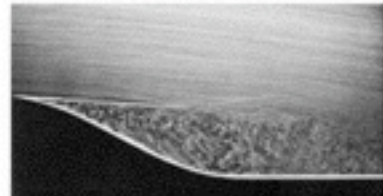


GLASS WALKWAY - CALATRAVA SUNDIAL BRIDGE

MIRRORED-OPTICAL (FLAT OR MARINE-INSPIRED?) SURFACES



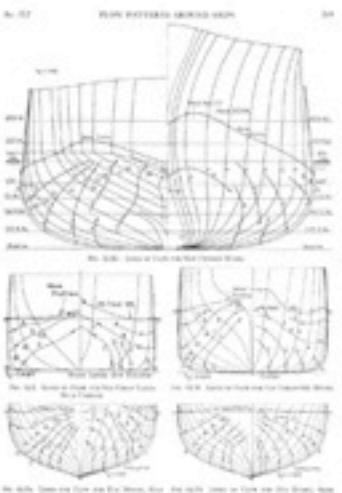
MIRRORED STAINLESS STEEL-LINED/UPLIT KAYAK/WALKING SPACE



TURBULENCE/LAMINAR SEPARATION FROM CURVED WALL



FLOW VECTORS ON A MODEL, GIVING VELOCITY MAGNITUDE AND DIRECTION



SITED SCULPTURE: RECIPROCAL RESCUE

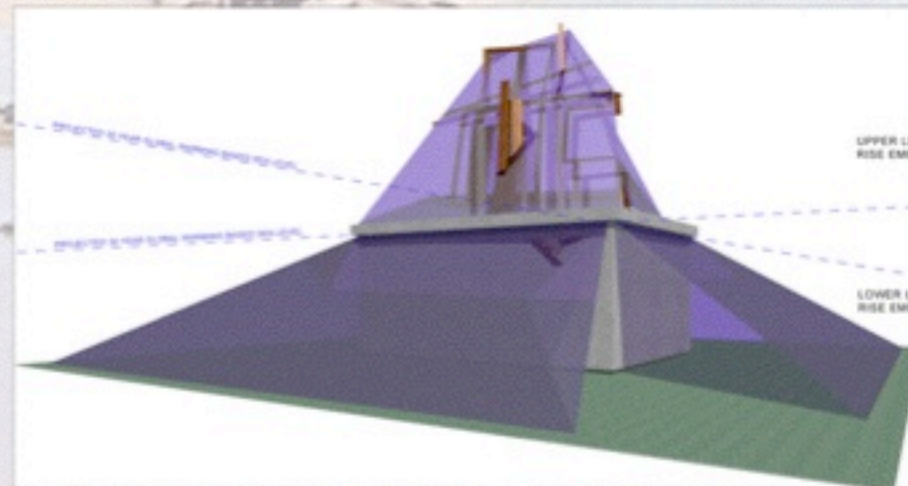
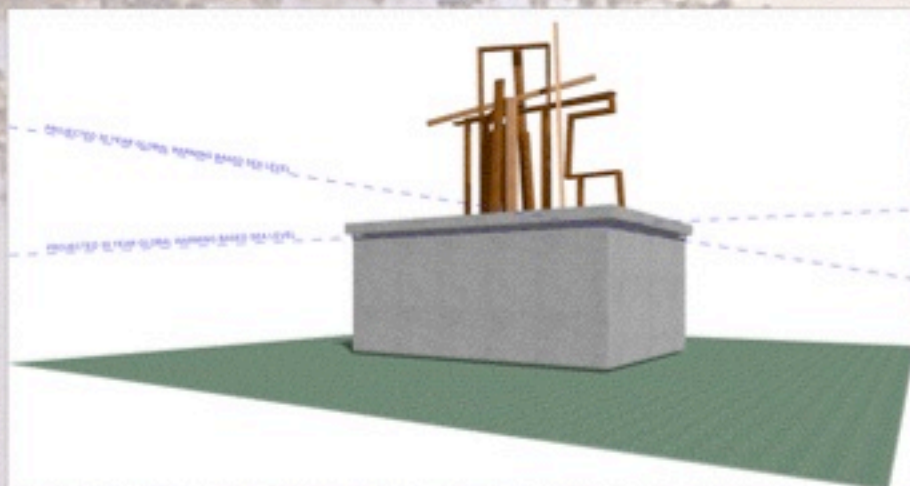
THE ESTUARY CHANNEL SCULPTURE COLLECTION IS PRESENTLY
CONTROVERSIAL AND IN A STATE OF NEGLECT.

DESOTO/ROLOFF PROPOSE A DUAL (RECIPROCAL) SYSTEM TO EXTEND THE
PHYSICAL, CONCEPTUAL AND CULTURAL RELATIONSHIP OF THE SCULPTURE
TO THE ESTUARY SITE.

THE SCULPTURE IS RESCUED, LIKE ABU SIMBEL, FROM THE RISING SEAS OF
GLOBAL WARMING (AND CONTROVERSY) BY ELEVATION ON PLINTHS PACKED
WITH EMERGENCY SUPPLIES. THE SCULPTURES BECOME ARMATURES FOR
SURVIVAL.

IN TIMES OF EMERGENCY, AS DURING THE 1906 EARTHQUAKE, PARKS
BECOME REFUGE SITES. THE ESTUARY CHANNEL SPACE IS NOW PREPARED
TO AID ITS CITIZENS.

STUDY: SCULPTURE COLLECTION: RECIPROCAL RESCUE



SCULPTURE COLLECTION: RESCUED

Like the ancient Egyptian sculpture/temple, Abu Simbel, saved from the man-made incursion of rising water caused by the filling of the Aswan Dam, each sculpture in the Estuary Channel Sculpture Park (and selected trees...) is rescued from the man-made incursion of rising sea levels caused by global warming. In this scenario, each sculpture is raised on support structures to the projected 30 year sea level. In turn acting as rescuers, each support structure contains emergency refugee survival materials, hidden from view until needed.

Each sculpture may have a different support/elevation system, according to its aesthetics and site relationship. Different support structure designs provide storage, shade, power and boat mooring.

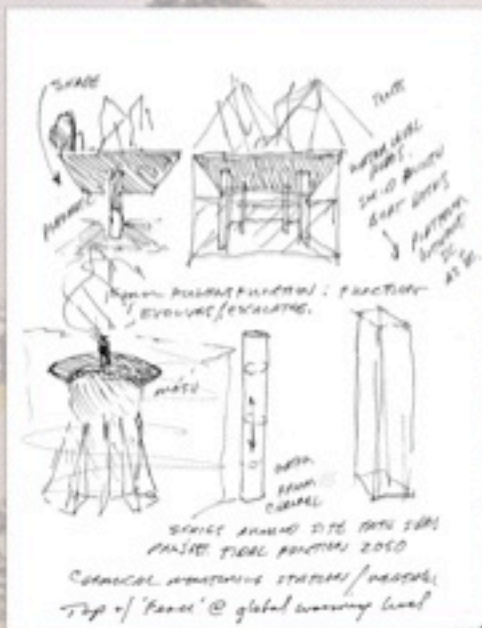
SCULPTURE COLLECTION: RESCUER

In a reciprocal gesture, in times of emergency, each sculpture and elevated support system becomes an armature and resource for solar tents/awnings for power, related survival systems, emergency food, water and equipment, housed within the support structure. In the same way that parks in San Francisco and US Army tents became havens for refugees at the time of the 1906 earthquake, the Estuary Channel Park is now prepared to preserve its sculpture collection and give aid to its citizens in time of emergency.

There is an over 60% chance for an 8.0 quake in the Bay Area, including a 30% 8.0 earthquake on the nearby Hayward fault in the next 30 years, as well as a range of projected sea level increases over that same time period.

Each solar tent is carefully designed to provide emergency power and work with the unique structures of each sculpture: function follows form.

Survival system may work with other related programs on site, e.g., proposed medical opium poppy cultivation for morphine/sedative production for emergency situations, grown and organized by Oakland street gangs and a flag signal system in case of power outage.



SUPPORT STRUCTURE STUDIES



NEAR FT. MASON, 1906 - ONE OF MANY REFUGEE CAMPS AFTER THE SAN FRANCISCO EARTHQUAKE



ABU SIMBEL WAS RAISED OVER 200 FT. ABOVE ITS ORIGINAL SITE IN THE LATE 1960'S

SITE SCULPTURE CONCEPTUAL STUDY: LAKE MERRITT ESTUARY CHANNEL PROJECT SASAKI . LEWIS DE SOTO . JOHN ROLOFF

